



Journée ARAMIS 2016
ISC Bron, 07 avril 2016

**Processus de publication des données
primaires sur la biodiversité via les outils
et le réseau GBIF**

gbif@gbif.fr

www.gbif.org / www.gbif.fr

Sommaire

- 1. Présentation du GBIF et de ses standards**
2. Integrated Publishing Toolkit (IPT)
3. IPT : nouvelles fonctionnalités



Qu'est-ce que le GBIF?

Programme intergouvernemental créé en 2001, à l'initiative du comité scientifique de l'OCDE

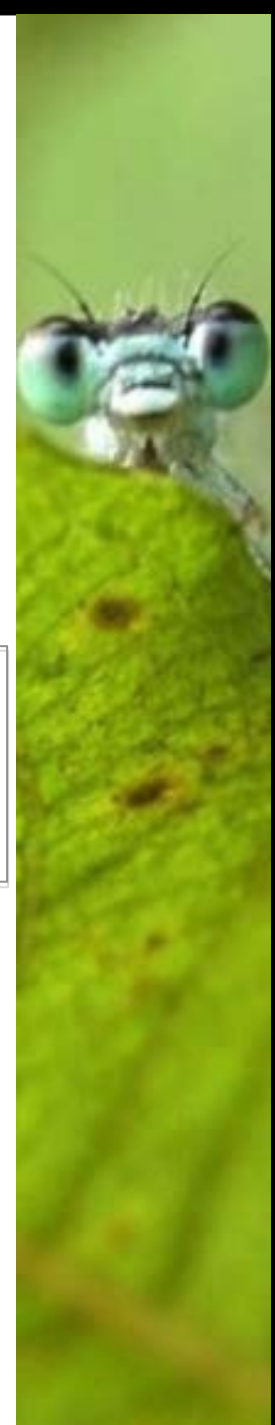
Objectif

La diffusion **libre, gratuite et universelle**, via **Internet**, de données scientifiques et d'informations relatives à la **biodiversité**



Moyen

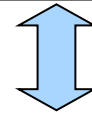
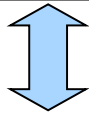
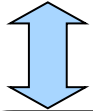
Créer des systèmes interopérables, formant ainsi un réseau mondial de bases de données scientifiques sur la biodiversité.



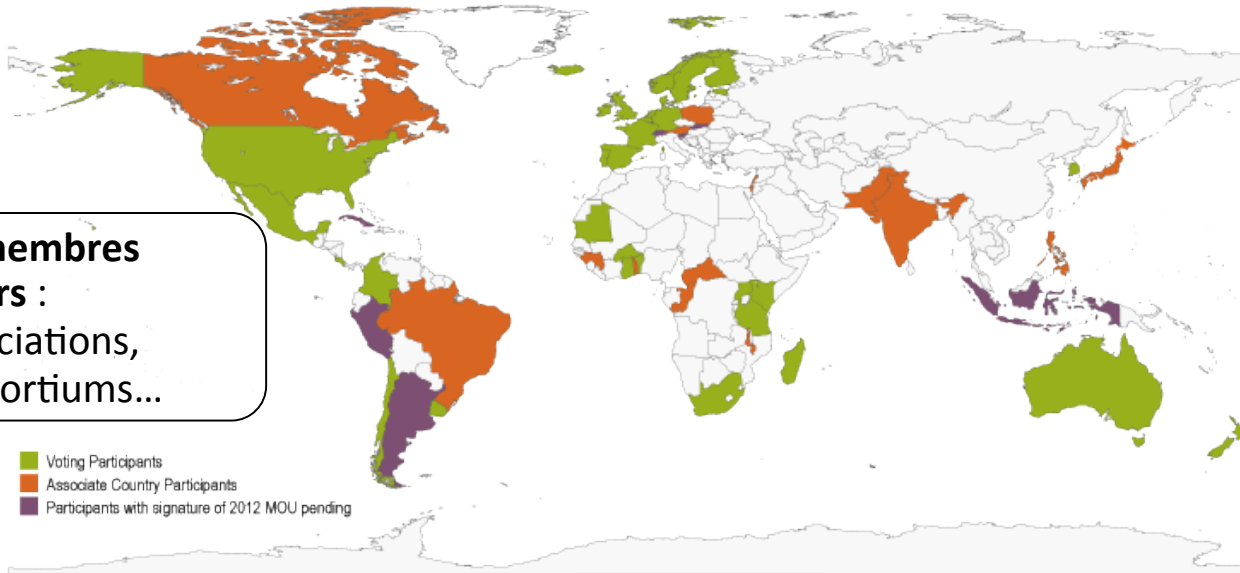
Qui participe au GBIF ?

Governing Board
Comité exécutif
Comité pour le budget
Comité des noeuds participants
Comité scientifique

Secrétariat
Directeur
Agents



94 Participants



54 pays



Types de données partagées via le GBIF

Collections d'herbiers et de muséums



Etudes de terrain, projets de monitoring



Observations de Science Participative ou Citoyenne

iNaturalist.org Observations Species Projects Places Guides People



Explore!
Your World!



Learn!
About Life!



Record!
Add Observations!

Données d'occurrences extraites de la littérature

Mr. Wiscn's Flora of Northumberland, &c. 129

Coniferus setaceus, Eng. Bot. 1689; Dillwyn, t. 82.
Among the rejectments on the coast, N. and D. Near Berwick.—Dr. G. Johnston.

2. *G. cynosugetum*.
Gr. Fl. Eds. 312; *Coniferus cynosugetum*, Eng. Bot. 1479; Dillwyn, t. 54.
On the beach at Hartlepool, D.

3. *G. ovalis*.
Hook. Fl. Scot. 84; *Coniferus ovalis*, Dillwyn, 98; Eng. Bot. 1815; Lightfoot, 988.
On the coast near Hartley, and at Newbiggin, N. In Manhaven near Whitburn, D.

239. CLADOSTEPHUS.
1. *C. verticillatus*.
Gr. Fl. Eds. 312; *Coniferus verticillatus*, Dillwyn, t. 55; Eng. Bot. 1718.
On the beach at Sunderland and Hartlepool, D.

2. *C. spongiosus*.
Gr. Fl. Eds. 319; Berwick Flora, ii. 245; *Coniferus spongiosus*, Eng. Bot. 2457; Dillwyn, t. 42.
On rocks near Hartley, N. Near Hartlepool, Whitburn, and Sunderland, D. Near Berwick.—Dr. G. Johnston.

Sunderland, and on the bark of the Holly in Gilsie and Ravensworth Woods, D. On rocks at Howley, N.—W. C. Trevclyns, Esq. Near Berwick.—Dr. G. Johnston.

2. *A. linearis*.
Spruce-Sydes, Veg. iv. 345; Berwick Flora, ii. 245. On the bark of Ash Trees.—Dr. G. Johnston.

241. CONPERVA.
1. *C. tortuosa*.
Gr. Fl. Eds. 315; Eng. Bot. 2220; Dillwyn, t. 46; Berwick Flora, ii. 253; *C. curvis*, Dillwyn, t. 76.

2. *C. fasciata*.
Gr. Fl. Eds. 316; Dillwyn, p. 53, t. C; Eng. Bot. 2310; Berwick Flora, ii. 253; *C. curvis*, Dillwyn, t. 76.
On *Fucus nodosus* and *F. vesiculosus*, N. and D. At Scaevon, D.—Mr. Backhouse. Near Berwick.—Dr. G. Johnston.

3. *C. fasciata*.
Gr. Fl. Eds. 316; Dillwyn, t. 66; Berwick Flora, ii. 253.
Parasitical on *Fucus nodosus* and *F. vesiculosus*.



Global Biodiversity Information Facility

Free and Open Access to Biodiversity Data

652,694,361

OCCURRENCES

1,634,951

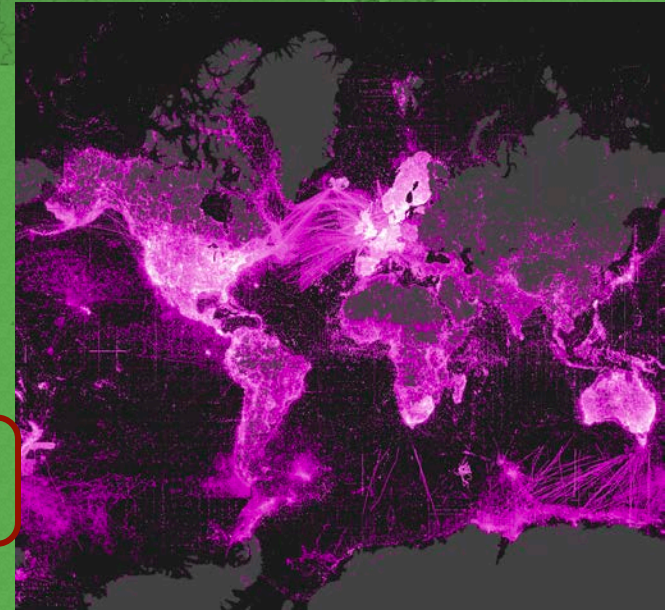
SPECIES

15,743

DATASETS

803

DATA PUBLISHERS



Sharing biodiversity data for re-use

[Learn about GBIF](#)

[Publish your data through GBIF](#)

[Technical infrastructure](#)

Providing evidence for research and decisions

[Using data through GBIF](#)

[Enabling biodiversity science](#)

[Supporting global targets](#)

Collaborating as a global community

[Current Participants](#)

[How GBIF is funded](#)

[Enhancing capacity](#)

Search news items and information pages...

Search 🔍

Que fait le GBIF ?

- Promotion de l'utilisation de standards communs et d'outils libres pour l'échange et la gestion de données primaires sur la biodiversité
- Maintenance du site www.gbif.org et des web services
- Aide à la mise en place de portails et de systèmes d'information nationaux sur la biodiversité
- Collaboration et participation aux réseaux sur la biodiversité à l'échelle mondiale et régionale





France

A GBIF Voting Participant from Europe

Names of countries, territories and islands are based on the ISO 3166-1 standard.

Summary

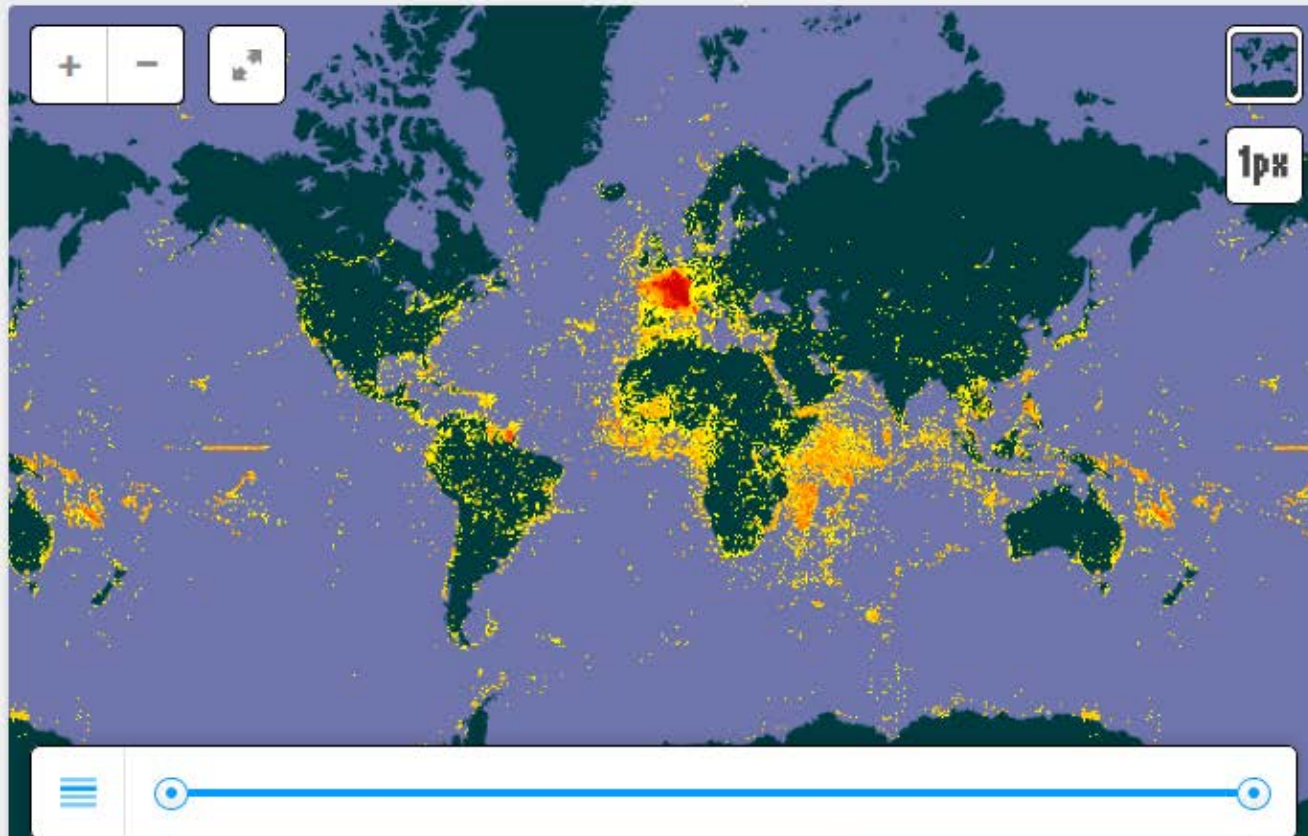
Data About

Data Publishing

Participation

News and Events

Publications



Data from France

- 152 occurrence datasets with 39,634,545 records.
- 1 checklist dataset with 281,367 records.
- 2 metadata-only datasets.
- France publishes data covering 248 countries, territories and islands.

[View records shown on the map](#)

Infrastructure

How GBIF works as a global informatics infrastructure

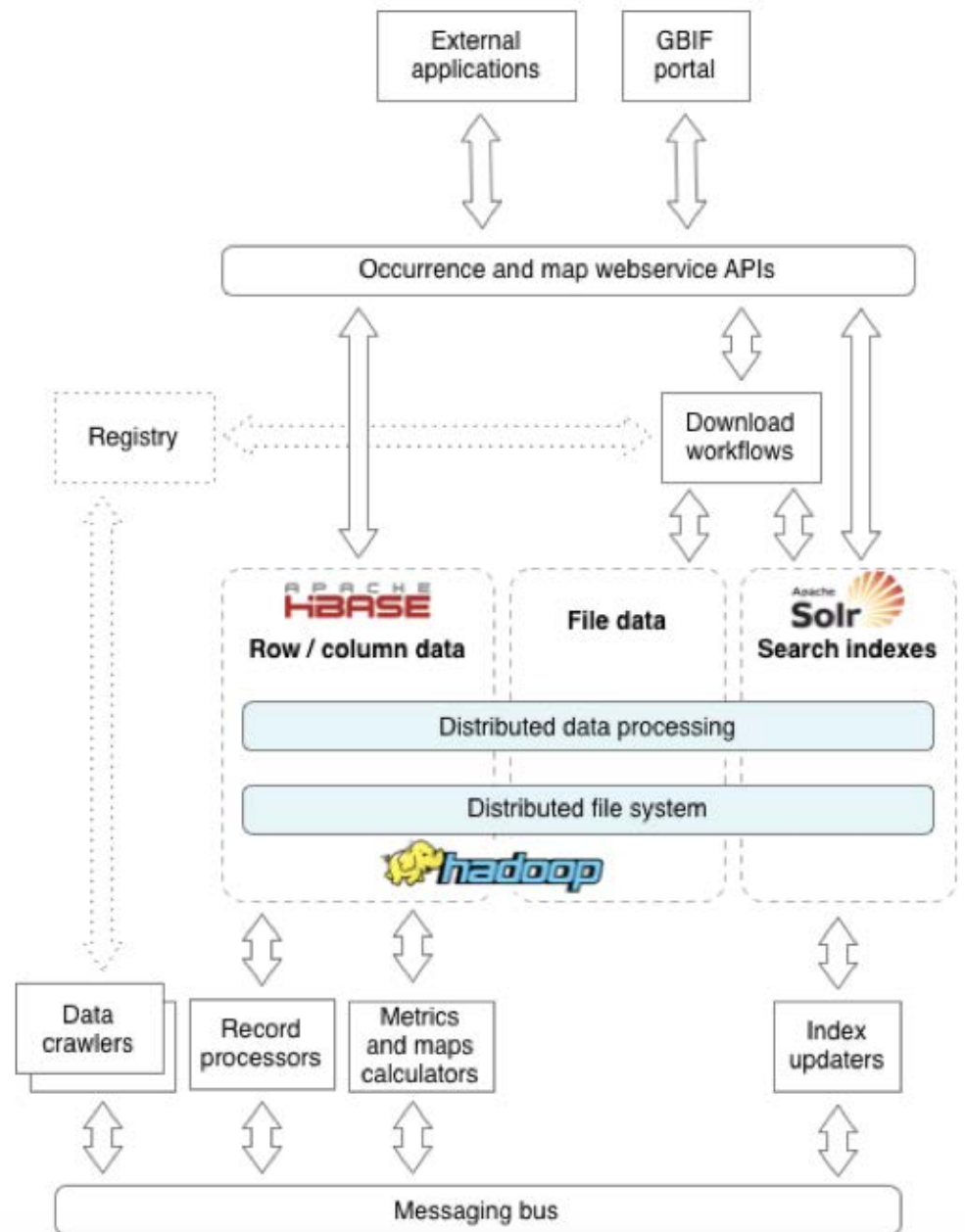
Summary | Registry | Occurrences | Data processing

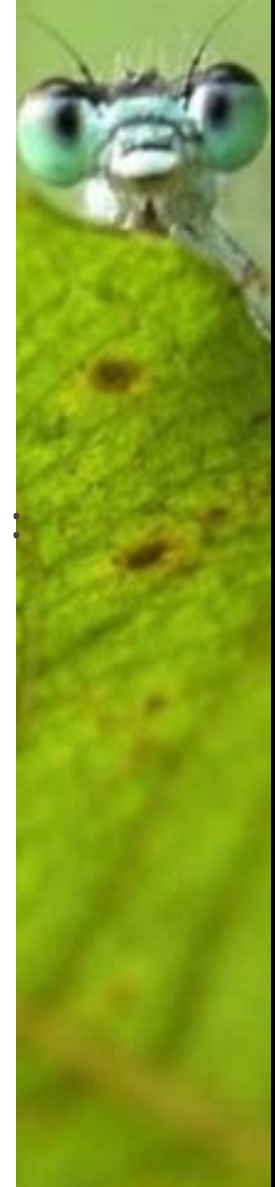
About

The GBIF informatics architecture provides an open platform for biodiversity databases around the world.

The distributed infrastructure spans across the hundreds of GBIF enabling users to discover, access, integrate and help shared on the network.

The GBIF architecture encompasses well-known community and protocols enabling interoperability at global scale. As a growing number of tools and workflows are able to connect the network.

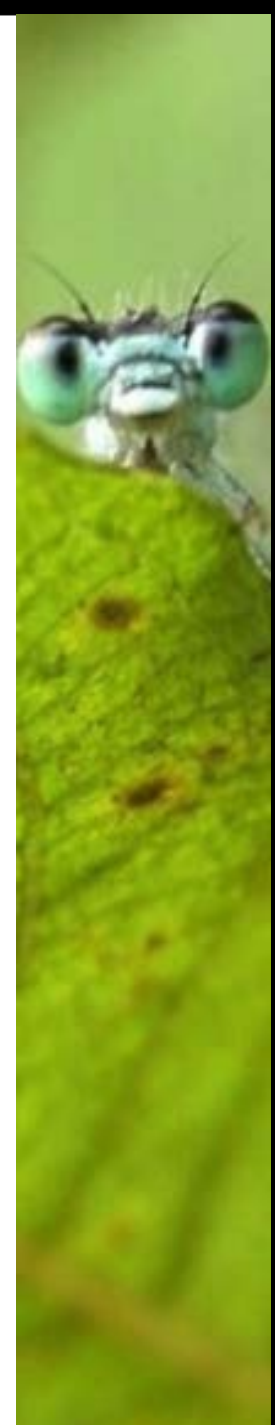




- ⇒ Tous les outils développés par le GBIF sont **libres** et **open source**, et utilisent des **standards internationaux**.
- ⇒ **Toutes les données peuvent être téléchargées** (pas de restriction de taille) et **réutilisées par d'autres sites ou portails** (via les API).
- ⇒ **Utilisation:** ces données, corrélées à des données environnementales, contribuent à la recherche scientifique et aident à la prise de décisions dans les domaines suivants :
1. Espèces menacées, migratrices et invasives
 2. Impacts du changement climatique
 3. Politiques de conservation
 4. Gestion des ressources naturelles
 5. Agriculture, gestion forestière, pêche et exploitations minières
 6. Santé publique et sécurité alimentaire
- Et plus encore...

Sommaire

1. Présentation du GBIF et de ses standards
2. **Integrated Publishing Toolkit (IPT)**
3. IPT : nouvelles fonctionnalités

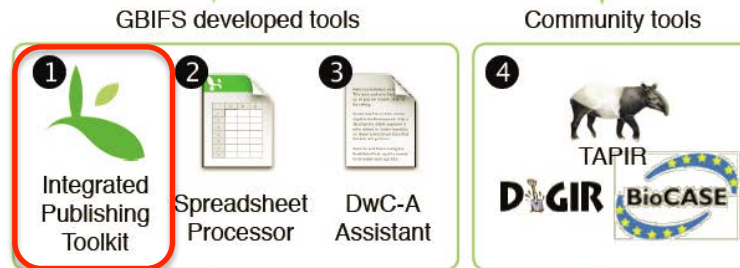


Publier des données via le GBIF

Which type of data?



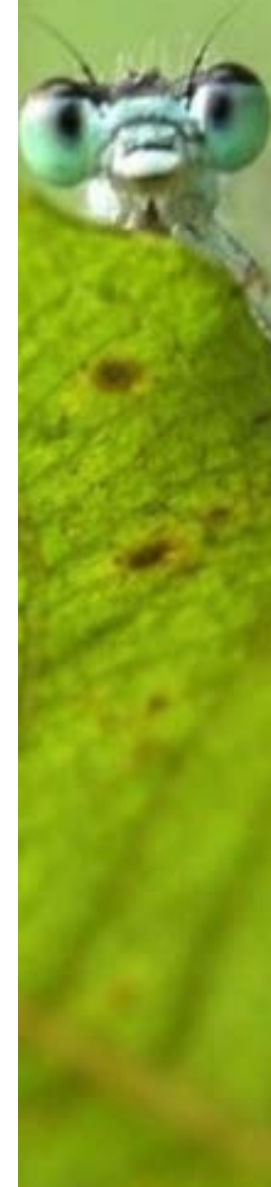
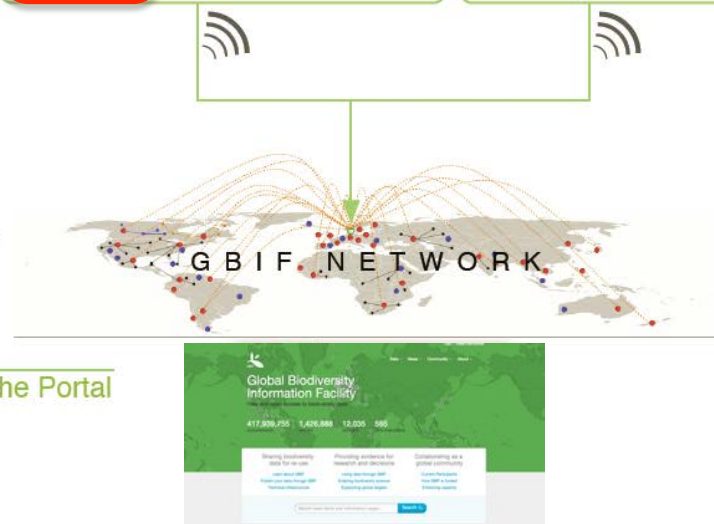
Select a tool



Publish your data

Register with GBIF

Discovery through the Portal



Standards de données



Métadonnées



Ecological Metadata
Language (**EML**)

- *Description riche des jeux de données*
- *Profil de métadonnées dans le GBIF*

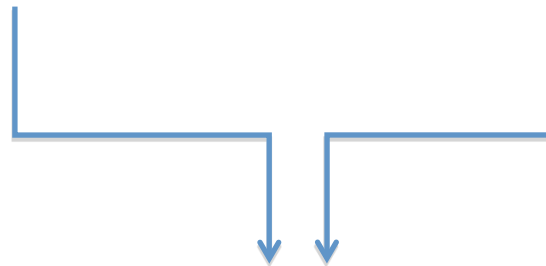


國語英名: 蝶
Eulodina homena (Hübner, 1823)
Female
27-XI-2008, Siaruyen,
Sriker, Taipei City, Taiwan
identified by Bettaman

Données primaires
sur la biodiversité



Données
taxonomiques

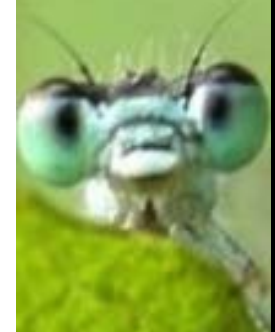


Darwin Core

- *190 termes*
- *Ratifié en 2009 (TDWG)*
- *Fichiers texte*
- *Extensions thématiques*

Ou ABCD (TDWG)

- *>1200 concepts*
- *utilisé par Biocase et Tapir*

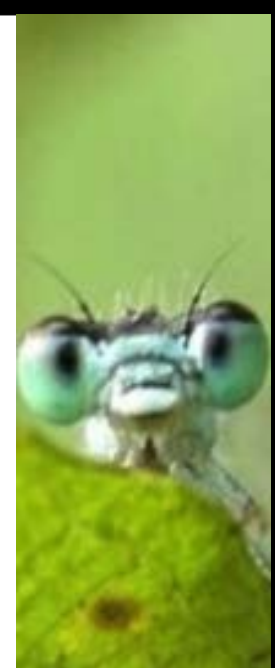
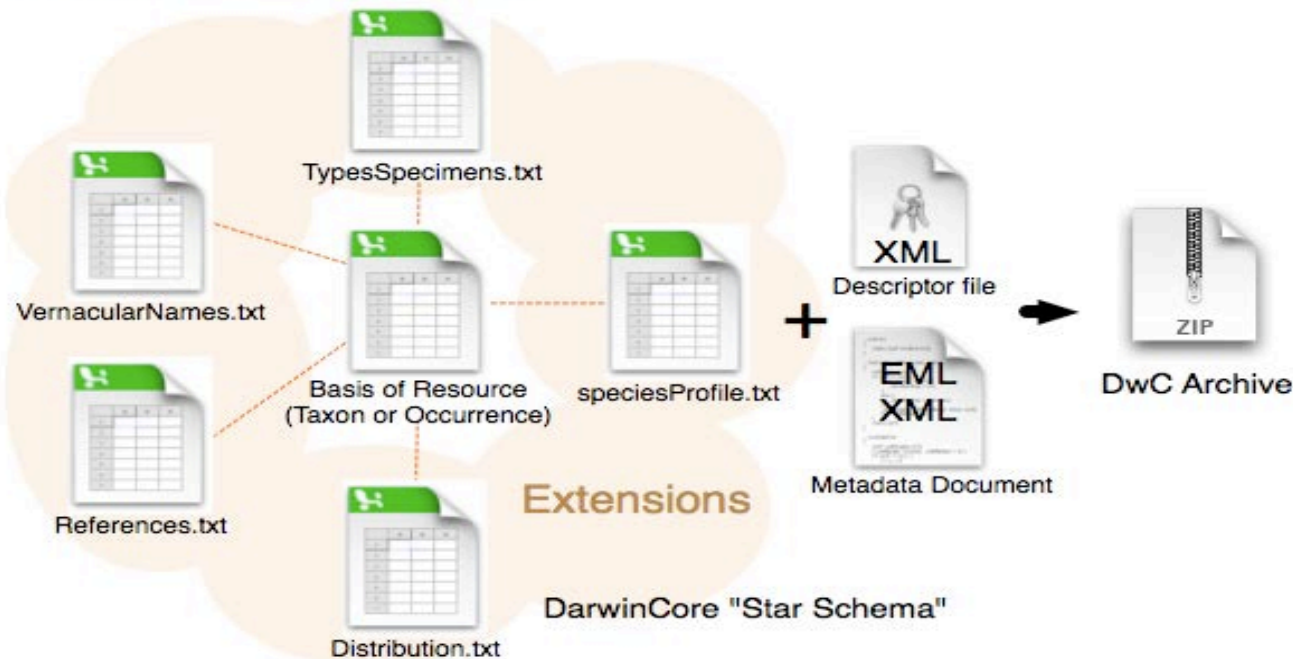


Archive Darwin Core

Contenu de l'archive :

- Une DwC-A = un jeu de données
- Dossier zippé contenant un ou plusieurs fichiers texte standardisés en Darwin Core
- Occurrences, données d'échantillonnage ou données taxonomiques
- Métadonnées au format EML

Darwin Core Archive Components



Termes Darwin Core

Darwin Core = standard de données → interopérabilité

Termes obligatoires :

- **institutionCode** (ex : MNHN) : nom ou acronyme de l'institution ayant la responsabilité de la donnée
- **collectionCode** (ex : Entomologie) : nom ou acronyme du jeu de données ou de la collection d'où il provient
- **catalogNumber** (ex : PPG-CF-00001) : identifiant (si possible unique) de chaque occurrence dans le jeu de données ou la collection
- **scientificName** (ex: *Canis lupus*) : nom scientifique complet avec date et auteur (si connus)
- **basisOfRecord** (ex : HumanObservation, specimen, fossil...) : nature de la donnée (vocabulaire contrôlé)



Integrated Publishing Toolkit (IPT)

A GBIF tool to enable the publishing of biodiversity datasets

v2.3

(Latest version)

[Download](#)

Summary

Stats

Releases

About the IPT

The Integrated Publishing Toolkit (IPT) is a free open source software tool written in Java that is used to publish and share biodiversity datasets through the GBIF network. Designed for interoperability, it enables the publishing of content in databases, Microsoft Excel spreadsheets, or text files using open standards namely the [Darwin Core](#) and the [Ecological Metadata Language](#). You can also use a 'one-click' service to convert your metadata into a draft [data paper manuscript](#) for submission to a peer-reviewed journal.



Since v2.2, the IPT has been capable of automatically connecting with either DataCite or EZID to assign DOIs to datasets. This new feature makes biodiversity data easier to access on the Web and facilitates tracking its re-use. You may read more about this and other new features introduced in version 2.2 [here](#).

The core development of the IPT happens at the GBIF Secretariat, but the coding, documentation, and internationalization are a community effort and everyone is welcome to join in. New versions incorporate the feedback from the people who actually use the

See also

RESOURCES

- [User Manual \(es\)](#)
- [Mailing List](#)
- [Wiki](#)
- [FAQs](#)

FEEDBACK

- [Report a Bug](#)
- [Request an Enhancement](#)

Serveur pour l'application



Gestionnaire			
Lister les applications	Aide HTML Gestionnaire	Aide Gestionnaire	Etat du serveur

Applications					
Chemin	Version	Nom d'affichage	Fonctionnelle	Sessions	Commandes
/	None specified	Welcome to Tomcat	true	0	Démarrer <input type="button" value="Arrêter"/> <input type="button" value="Recharger"/> <input type="button" value="Retirer"/> <input type="button" value="Expirer les sessions"/> inactives depuis ≥ <input type="text" value="30"/> minutes
/docs	None specified	Tomcat Documentation	true	0	Démarrer <input type="button" value="Arrêter"/> <input type="button" value="Recharger"/> <input type="button" value="Retirer"/> <input type="button" value="Expirer les sessions"/> inactives depuis ≥ <input type="text" value="30"/> minutes
/examples	None specified	Servlet and JSP Examples	true	0	Démarrer <input type="button" value="Arrêter"/> <input type="button" value="Recharger"/> <input type="button" value="Retirer"/> <input type="button" value="Expirer les sessions"/> inactives depuis ≥ <input type="text" value="30"/> minutes
/host-manager	None specified	Tomcat Host Manager Application	true	0	Démarrer <input type="button" value="Arrêter"/> <input type="button" value="Recharger"/> <input type="button" value="Retirer"/> <input type="button" value="Expirer les sessions"/> inactives depuis ≥ <input type="text" value="30"/> minutes
/ipt	None specified	IPT	true	0	Démarrer <input type="button" value="Arrêter"/> <input type="button" value="Recharger"/> <input type="button" value="Retirer"/> <input type="button" value="Expirer les sessions"/> inactives depuis ≥ <input type="text" value="30"/> minutes
/manager	None specified	Tomcat Manager Application	true	1	Démarrer <input type="button" value="Arrêter"/> <input type="button" value="Recharger"/> <input type="button" value="Retirer"/> <input type="button" value="Expirer les sessions"/> inactives depuis ≥ <input type="text" value="30"/> minutes

IPT setup

Disclaimer

Since IPT version 2.2, publishers are required to assign one of three machine-readable rights declarations to their data. If you cannot agree to publish your data under a CC0 1.0, CC-BY 4.0 or CC-BY-NC 4.0 declaration, we recommend that you use version 2.1.1 of the IPT for now.

GBIF will begin working with existing publishers to implement and enforce this requirement across the network during 2015. If you are unable to choose one of the three options, and your dataset contains occurrence data, you will not be able to register your dataset with GBIF or make it globally discoverable through GBIF.org. For background on this decision, [click here](#).

I have read and understood the disclaimer

IPT data directory

To use the IPT you must select a directory where the IPT will store its configuration information - called the IPT data directory.

Please select an empty, writable folder or an existing IPT data directory. Do not select a folder that is vulnerable to other processes, such as /tmp, which may be emptied on a system restart. This folder should be backed up regularly in keeping with a disaster recovery plan.

For example, use a path such as "C:\datadir" for Windows environments or "/usr/datadir" for Unix-like environments such as Linux, Mac OS X.

IPT setup part II

Please provide additional information for the basic IPT setup.

You have successfully created a new data directory.

Default administrator

The password for the default administrator account can be modified later on, but the email cannot be changed without removing and re-creating the user.

Email

First Name

Last Name

Password

Verify Password

IPT Mode

Select the mode you would like to run the IPT in. The IPT mode decides whether or not the hosted resources will be indexed for public search access by GBIF. GBIF recommends IPT administrators try Test mode first in order to understand the registration process, and then reinstall in Production mode for formal data publishing. **Warning:** for a given installation, this selection is final and cannot be changed later on. To switch from test to production mode or vice versa, you will have to reinstall your IPT and repeat any configurations you made.

Test mode is for evaluating the IPT or running it in a training scenario. Resources registered with GBIF will go into a test registry and will never be indexed. All DOIs minted for resources in test mode should use a test prefix (e.g. 10.5072 for DataCite), meaning they are temporary.

Production mode is for publishing resources formally. Resources registered with GBIF go into the GBIF Registry and will be indexed. DOIs minted for resources cannot be deleted, and require resources to remain publicly accessible.

IPT mode: Test Production

Base URL

Base URL for this IPT

Proxy URL

Save



Home

Manage Resources

Administration

About



IPT settings ⓘ

[Publish all resources](#)



Users accounts



GBIF registration options



Organisations

The IPT must be registered with GBIF before associating organisations



Core Types and Extensions



Logs

Home

Manage Resources

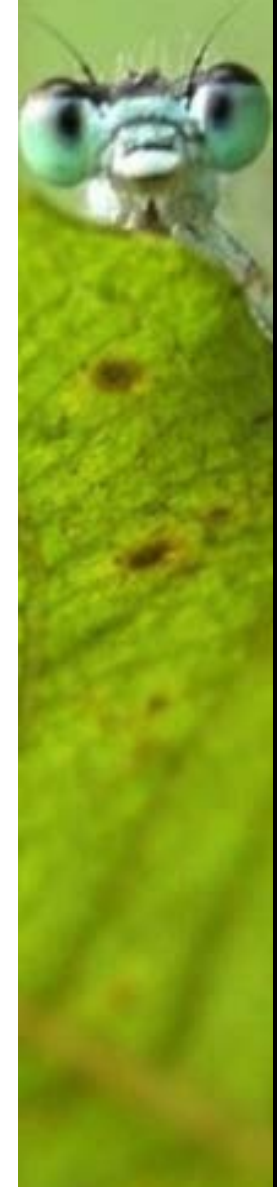
Administration

About

Resources you have rights to manage

Filter:

Name	Organisation	Type	Subtype	Records	Last modified	Last publication	Next publication	Visibility	Author
Base de données	Not registered	Occurrence	--	0	2015-09-24	Not published	--	Private	Sophie Pamerlon
LAGPLON - Polynésie française	SPN - Service du Patrimoine naturel, Muséum national d'Histoire naturelle, Paris	Occurrence	--	150	2015-09-21	2015-09-21	--	Public	Sophie Pamerlon
LAGPLON - Nouvelle-Calédonie	SPN - Service du Patrimoine naturel, Muséum national d'Histoire naturelle, Paris	Occurrence	--	4,791	2015-09-21	2015-09-21	--	Public	Sophie Pamerlon
test_sample_data	Not registered	Sampling event	--	0	2015-09-17	Not published	--	Private	Sophie Pamerlon
Donnees ONF Faune-Flore-Fonge	SPN - Service du Patrimoine naturel, Muséum national d'Histoire naturelle, Paris	Occurrence	--	637,398	2015-09-11	2015-09-11	--	Public	Sophie Pamerlon
INPN - Données flore des CBN agrégées par la FCBN	SPN - Service du Patrimoine naturel, Muséum national d'Histoire naturelle, Paris	Occurrence	--	20,999,334	2015-07-17	2015-07-17	--	Public	Sophie Pamerlon
Données flore des CBN agrégées par la FCBN	Not registered	Metadata-only	--	0	2015-07-17	Not published	--	Private	Sophie Pamerlon
Herbier G. Garapin (BOUM)	Muséum d'Histoire Naturelle de Bourges	Occurrence	Specimen	712	2015-02-18	2015-02-16	--	Public	Sophie Pamerlon
fundiv france database	Not registered	Occurrence	--	3,257	2015-02-18	2015-02-18	--	Public	Sophie Pamerlon




Create New Resource

You can create a new blank resource, upload an existing resource saved as a zipped Darwin Core archive, or upload an existing IPT resource using its zipped resource configuration folder. Please refer to the User Manual for more specific instructions. A short name is required as an identifier for the resource within this IPT installation. Please use only alphanumeric characters, hyphens, or underscores.

Shortname

Type

 Select a type (optional) ▾

Optional archived resource to load:

Choisissez un fichier Aucun fichier choisi

Create

Overview: [LAGPLON - Polynésie française](#)

This is the overview page for the *LAGPLON - Polynésie française* resource.

Source Data

Parcourir... Aucun fichier sélectionné.

Connect to database

Clear

Your source data files and SQL sources for generating a Darwin Core Archive.

Not modified since last publication

data [file] 77.4 KB, 150 rows, 37 columns. Sep 17, 2015

Edit

Darwin Core Mappings

Darwin Core Occurrence

Add

Your mapping between the source data and Darwin Core terms.

Not modified since last publication

Core

Darwin Core Occurrence 35 terms mapped to data.

↻ Edit

Metadata

Edit

Your resource metadata.

Not modified since last publication

Published Versions

Publish

Auto-publishing

Select interval

A preview of your pending published version compared with the current version if existing.

Version

Current version

1.2 View ✓

Pending version

1.3 Preview

Published on

Sep 21, 2015

Publication log

Download

Visibility **Registered**

This public resource is registered with GBIF meaning that it is globally discoverable via the [GBIF website](#).

GBIF UUID

[eed49c61-2085-46c4-8c4f-d2cda50fd404](#)

Organisation

[SPN - Service du Patrimoine naturel, Muséum national d'Histoire naturelle, Paris](#)

Organisation Contact

Frédéric Vest, vest@mnhn.fr

Endorsing Node

[GBIF France](#)

Resource Managers

Add

Managers granted permission to modify this resource.

Creator

Sophie Pamerlon, pamerlon@gbif.fr

Delete



Home

Manage Resources

Administration

About

Resource Title test_sp

Source Data

Edit your source data format

Source Name

Readable

Columns 45

File /var/www/private/ipt/ipt_data/resources/test_sp/sources/occurrence_gbif_potato_20130513copie.txt

Size 39 KB

Rows 99

Modified 09/01/14

Source log [Download](#)

Analyze

Preview

Number of Header Rows

Field Quotes

Date Format

Save

Cancel

Delete source file

Field Delimiter

Character Encoding



- Home
- Manage Resources**
- Administration
- About

Overview: test_sp

This is the overview page for the test_sp resource. Please start by uploading and mapping source data to generate and publish a Darwin Core archive. Dont forget to fill in the mandatory metadata. Published resources can be registered with the GBIF Network. Registered resources can be removed, but they cannot be reverted to a private state.

Source Data

Aucun fichier choisi

Your source data files for generating a Darwin Core Archive. You can upload delimited text files (csv, tab, and files using any other delimiter) either directly or compressed (zip or gzip). To (re)upload a file, please select the local file then click "Add". Alternatively, you can configure SQL views to databases in your local network. To create a new SQL source, please click "Connect to database" without any file chosen.

occurrence_gbif_potato_20130513copie 39 KB, 99 rows, 45 columns. 09/01/14

Darwin Core Mappings

Your mapping between the source data and Darwin Core terms.

Darwin Core Occurrence 43 terms mapped to occurrence_gbif_potato_20130513copie



Metadata

description
Keywords Occurrence

Published Release

Auto-publishing

When publishing a new release, a new EML version, RTF version, and a Darwin Core Archive (DwC-A) will be created. A DwC-A bundles all source files with mappings and metadata in one zipped archive.

Visibility *Private*

This resource is private to managers. To make this resource available to everyone, please make it public.

Resource Managers

Resources can be managed by several managers. You can grant other managers permission to modify test_sp.

Creator Sophie Pamerlon, pamerlon@gbif.fr





IndividualCount is mapped to values with the wrong data type.
maximumDepthInMeters is mapped to values with the wrong data type.
maximumElevationInMeters is mapped to values with the wrong data type.
minimumDepthInMeters is mapped to values with the wrong data type.
minimumElevationInMeters is mapped to values with the wrong data type.

Resource Title **LAGPLON - Polynésie française**

Field Index

Record Level

Occurrence

Event

Location

GeologicalContext

Identification

Taxon

Unmapped columns

Field Filters

Hide unmapped fields

Save

Delete

Back

Mapping Source Data

Mapping source data [data](#) to core extension: [Darwin Core Occurrence](#).

occurrenceID

id

Source Sample: 1 | 2 | 3 | 4 | 5

Filter

AfterTranslation

Record Level

dcterms:type

dcterms:modified

dcterms:language

dcterms:rights

dcterms:rightsHolder

dcterms:accessRights

dcterms:bibliographicCitation

institutionID

collectionID

collectionID

Source Sample: 38 | 38 | 38 | 38 | 38

Translation:

Add

datasetID

datasetID

Use resource DOI

Source Sample: LAGPLON - Polynésie française | LAGPLON - Polynésie française | LAGPLON - Polynésie française | LAGPLON - Polynésie française | LAGPLON - Polynésie française

Translation:

Add

Field Index

Record Level

Occurrence

Event

Location

GeologicalContext

Identification

Taxon

Unmapped columns

Field Filters

Hide unmapped fields

Save

Delete

Back

Source Sample: Agariciidae | Agariciidae | Halimedaceae | Halimedaceae | Halimedaceae

Translation:

① **genus**

Source Sample: Gardineroseris | Pavona | Halimeda | Halimeda | Halimeda

Translation:

① **subgenus**

① **specificEpithet**

① **infraspecificEpithet**

① **taxonRank**

① **verbatimTaxonRank**

① **scientificNameAuthorship**

① **vernacularName**

① **nomenclaturalCode**

① **taxonomicStatus**

① **nomenclaturalStatus**

① **taxonRemarks**

Save

Delete

Back

Unmapped columns

The following columns of the source are not mapped to any field in this extension:

- id
- acceptedTaxonName

Overview: [LAGPLON - Polynésie française](#)

This is the overview page for the *LAGPLON - Polynésie française* resource.

Source Data

Parcourir... Aucun fichier sélectionné.

Connect to database

Clear

Your source data files and SQL sources for generating a Darwin Core Archive.

Not modified since last publication

data [file] 77.4 KB, 150 rows, 37 columns. Sep 17, 2015

Edit

Darwin Core Mappings

Darwin Core Occurrence

Add

Your mapping between the source data and Darwin Core terms.

Not modified since last publication

Core

Darwin Core Occurrence 35 terms mapped to data.

Edit

Metadata

Edit

Your resource metadata.

Not modified since last publication

Published Versions

Publish

Auto-publishing

Select interval

A preview of your pending published version compared with the current version if existing.

Version

Current version

1.2 View ✓

Pending version

1.3 Preview

Published on

Sep 21, 2015

Publication log

Download

Visibility **Registered**

This public resource is registered with GBIF meaning that it is globally discoverable via the [GBIF website](#).

GBIF UUID

[eed49c61-2085-46c4-8c4f-d2cda50fd404](#)

Organisation

[SPN - Service du Patrimoine naturel, Muséum national d'Histoire naturelle, Paris](#)

Organisation Contact

Frédéric Vest, vest@mnhn.fr

Endorsing Node

[GBIF France](#)

Resource Managers

Managers granted permission to modify this resource.

Creator

Sophie Pamerlon, pamerlon@gbif.fr

Delete

Basic Metadata

Please enter all the mandatory properties on the Basic Metadata page, and then continue entering metadata in the other pages that are applicable to your resource. The more metadata you provide, the greater the chance that your resource will be found, reused by other researchers, and cited.

Title*

LAGPLON - Polynésie française

Publishing Organisation*

SPN - Service du Patrimoine

Type*

Occurrence

Metadata Language*

French

Update Frequency*

Unknown

Subtype

Select a subtype

Data Language*

French

Data Licence*

Creative Commons Attribution (CC-BY) 4.0



This work is licensed under a [Creative Commons Attribution \(CC-BY\) 4.0 License](#).

Description*

[Remove this Paragraph]

Ce jeu de données contient toutes les données de LAGPLON concernant la Polynésie française. L'intégration de ces données dans l'INPN s'est faite dans le cadre du programme IPRECOR.
Créé en 1975 par le service plongée de l'ORSTOM (Office de la Recherche Scientifique et Technique Outre-Mer) de Nouméa, LAGPLON est un système d'information de la biodiversité marine des récifs et lagons de Nouvelle-Calédonie et d'autres régions de l'Indo-Pacifique. Depuis quelques années

[Add new Paragraph]

Resource Contacts*

[Remove this resource contact]

First Name

Claude

Last Name*

Payri

Position*

Directrice de recherche

Organisation*

IRD de Nouvelle-Calédonie

Section

[Basic Metadata](#)

[Geographic Coverage](#)

[Taxonomic Coverage](#)

[Temporal Coverage](#)

[Keywords](#)

[Associated Parties](#)

[Project Data](#)

[Sampling Methods](#)

[Citations](#)

[Collection Data](#)

[External links](#)

[Additional Metadata](#)

Gestion des ressources

Source Data

Aucun fichier choisi

Your source data files for generating a Darwin Core Archive. You can upload delimited text files (csv, tab, and files using any other delimiter) either directly or compressed (zip or gzip). To (re)upload a file, please select the local file then click "Add". Alternatively, you can configure SQL views to databases in your local network. To create a new SQL source, please click "Connect to database" without any file chosen.

occurrence_gbif_potato_20130513copie 39 KB, 99 rows, 45 columns. 09/01/14
[file]

Darwin Core Mappings

Your mapping between the source data and Darwin Core terms.

Darwin Core Occurrence 43 terms mapped to occurrence_gbif_potato_20130513copie

Metadata

description

Keywords Occurrence

Published Release

When publishing a new release, a new EML version, RTF version, and a Darwin Core Archive (DwC-A) will be created. A DwC-A bundles all source files with mappings and metadata in one zipped archive.

Auto-publishing

Visibility *Private*

Rendre public

managers. To make this resource available to everyone, please make it public.

Resource Managers

Resource: permission to modify test_sp.

Creator Sophie Pamerlon, pamerlon@gbif.fr

Ajouter un gestionnaire

Source Data

Choisissez un fichier Aucun fichier choisi

Connect to database Clear

Your source data files for generating a Darwin Core Archive. You can upload delimited text files (csv, tab, and files using any other delimiter) either directly or compressed (zip or gzip). To (re)upload a file, please select the local file then click "Add". Alternatively, you can configure *SQL views* to databases in your local network. To create a new SQL source, please click "Connect to database" without any file chosen.

occurrence_gbif_potato_20130513copie 39 KB, 99 rows, 45 columns. 09/01/14
[file]

Edit

Darwin Core Mappings

Darwin Core Occurrence

Add

Your mapping between the source data and Darwin Core terms.

Darwin Core Occurrence 43 terms mapped to
occurrence_gbif_potato_20130513copie

Edit

Metadata

Edit

description

Keywords Occurrence

Published Release

Publish

Publier le jeu de données

on, RTF version, and a Darwin Core Archive (DwC-A) will be created. A metadata in one zipped archive.

Auto-publishing Select interval ⓘ

Visibility *Private*

Public

This resource is private to managers. To make this resource available to everyone, please make it public.

Resource Managers

Resources can be managed by several managers. You can grant other managers permission to modify test_sp.

Creator Sophie Pamerlon, pamerlon@gbif.fr

Delete

Home

Manage Resources

Administration

About

Publishing version #1 of resource test_sp started

test_sp

Publishing Status

Jan 9, 2014 5:32:58 PM

Publishing version #1 of resource test_sp finished successfully

Continue to [resource overview](#).

Download the complete [Publication Log](#)

Log Messages

- Archive generation started for version #1 5:32:39 PM
- Start writing data file for Darwin Core Occurrence 5:32:39 PM
- Data file written for Darwin Core Occurrence with 99 records and 44 columns 5:32:39 PM
- All data files completed 5:32:39 PM
- EML file added 5:32:39 PM
- meta.xml archive descriptor written 5:32:39 PM
- Archive compressed 5:32:39 PM
- Archive generated successfully! 5:32:39 PM

Enregistrement d'une ressource (1)

Visibility **Public**

BRC Forage and turf, II

Register

Private

This resource is public and available to everyone. To make it discoverable, please select the organisation to which the resource is associated and register it with GBIF. To make it accessible only to managers, make it private.

i If you want this resource to update an existing registered DiGIR, BioCASE, or TAPIR resource, please ensure the resource is registered against the same owning organization, and that the existing registered resource UUID has been added to the resource's list of alternative identifiers on the [Additional Metadata](#) page.

Visibility **Public**

✓ BRC Forage and turf, INRA Lusignan

Agoralogie

Muséum d'Histoire Naturelle de Bourges

Musee Vert, Museum d'Histoire Naturelle du Mans

Muséum d'Histoire Naturelle de Nice

INRA Antilles-Guyane

Musée Zoologique de la Ville de Strasbourg

IFREMER - French Research Institute for Exploitation of the Sea

Museum George Sand et de la Vallee Noire

Musee de la Valle

Université de Strasbourg

Museum Henri-Lecoq de Clermont-Ferrand



Add

This resource is public and available to everyone. To make it discoverable, please select the organisation to which the resource is associated and register it with GBIF. To make it accessible only to managers, make it private.

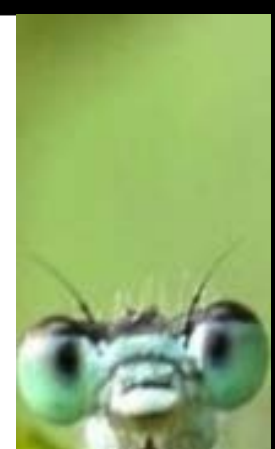
i If you want this resource to update an existing registered DiGIR, BioCASE, or TAPIR resource, please ensure the resource is registered against the same owning organization, and that the existing registered resource UUID has been added to the resource's list of alternative identifiers on the [Additional Metadata](#) page.

Resources can be managed by several managers. You can grant other managers permission to modify test_sp.

Creator

Sophie Pamerlon, pamerlon@gbif.fr

Enregistrement d'une ressource (2)



Published Versions

[Publish](#)

Auto-publishing
Select interval

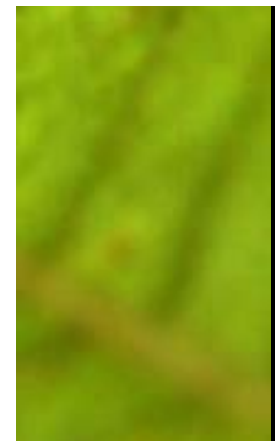
A preview of your pending published version compared with the current version if existing.

	Current version	Pending version
Version	1.2 View ✓	1.3 Preview
Published on	Sep 21, 2015	-
Publication log	Download	-

Visibility *Registered*

This public resource is registered with GBIF meaning that it is globally discoverable via the [GBIF website](#).

GBIF UUID	eed49c61-2085-48c4-8c4f-d2cda50fd404
Organisation	SPN - Service du Patrimoine naturel, Muséum national d'Histoire naturelle, Paris
Organisation Contact	Frédéric Vest, vest@mnhn.fr
Endorsing Node	GBIF France





MNHN - Museum national d'Histoire naturelle

Data publisher. More info at: <http://www.mnhn.fr>

Information

Data publisher information

FULL TITLE

MNHN - Museum national d'Histoire naturelle

WEBSITE

<http://www.mnhn.fr>

DESCRIPTION

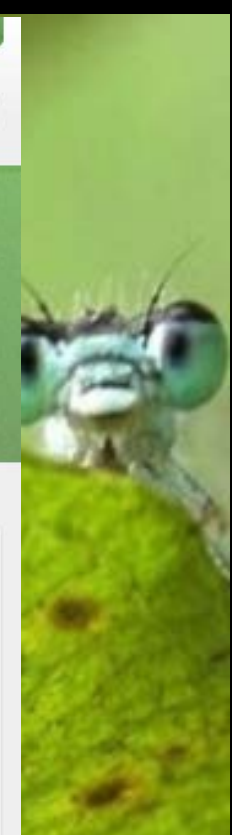
The MNHN is the main French institution for natural history. Both a scientific establishment and a public service, applying itself to research and the dissemination of knowledge, the Museum has five main foundations of its activities. *Fundamental and applied research *Education and pedagogy *Dissemination

ENDORSED BY

[GBIF France](#)

Published datasets

- [Coleoptera specimens of the Muséum national d'Histoire naturelle](#)
Occurrence dataset. Updated 19 sept. 2012. 3 682 records (1 288 georeferenced)
- [Orthoptera collection at the Muséum national d'Histoire naturelle](#)
Occurrence dataset. Updated 19 sept. 2012. 2 348 records
- [Fish collections of Museum national d'Histoire naturelle](#)
Occurrence dataset. Updated 25 avr. 2012. 130 013 records (58 242 georeferenced)
- [Nematoda specimens](#)
Occurrence dataset. Updated 22 nov. 2011. 14 317 records
- [Reptile and Amphibian specimens](#)
Occurrence dataset. Updated 22 nov. 2011. 150 272 records
- [Tunicata specimens](#)
Occurrence dataset. Updated 22 nov. 2011. 8 887 records



Coleoptera collection (EC) of the Mus...

Occurrence dataset published by MNHN - Muséum national d'Histoire naturelle

4 537

Occurrences

[View occurrences](#)

Information Stats Activity

Summary

FULL TITLE

Coleoptera collection (EC) of the Muséum national d'Histoire naturelle (MNHN - Paris)

DOI [doi:10.15468/3leej](https://doi.org/10.15468/3leej)

PUBLISHED BY

MNHN - Muséum national d'Histoire naturelle

PUBLICATION DATE

4 juin 2015

REGISTRATION DATE

25 avr. 2012

SERVED BY

[MNHN - Collections](#)

ALTERNATIVE IDENTIFIERS

• [Source webpage](#)
<http://collections.mnhn.fr/pt...>

UUID

ef7d030-3013-43da-b686-6bafdd...

EXTERNAL DATA

• [Darwin Core Archive](#)



1 902 Georeferenced data

VIEW RECORDS

[All records](#) | [In viewable area](#)

ABOUT

[What does this map show?](#)

Other Contacts

CONTENT PROVIDER

[Antoine Mantilleri](#)

Citation and licensing

DEFAULT CITATION

MNHN - Muséum national d'Histoire naturelle: Coleoptera collection (EC) of the Muséum national d'Histoire naturelle (MNHN - Paris), 2015-06-03.
Accessed via <http://www.gbif.org/dataset/ef7d030-3013-43da-b686-6bafdd228131> on 2015-10-09



Documentation & Références

IPT v2 User Manual

<http://code.google.com/p/gbif-providertoolkit/wiki/IPT2ManualNotes>

Tutoriel de publication des données d'occurrences

<http://code.google.com/p/gbif-providertoolkit/wiki/TutorialOccurrenceResource>

Data Quality Hub

<http://www.gbif.es/BDQ.php>

Guides de bonnes pratiques en plusieurs langues



Sommaire

1. Présentation du GBIF et de ses standards
2. Integrated Publishing Toolkit (IPT)
3. IPT : nouvelles fonctionnalités



Licences pour les jeux de données

Home

Manage Resources

Administration

About

Resource Title [Collection malacologique Henri-Lecoq](#)

Basic Metadata

Please enter all the mandatory properties on the Basic Metadata page, and then continue entering metadata in the other pages that are applicable to your resource. The more metadata you provide, the greater the chance that your resource will be found, reused by other researchers, and cited.

Title*

Collection malacologique Henri-Lecoq

Publishing Organisation*

 Museum Henri-Lecoq de C ▼

Type*

 Occurrence ▼


Metadata Language*

 French ▼

Update Frequency*

 Unknown ▼


Subtype

 Select a subtype ▼

Data Language*

 French ▼

Data Licence*

- 
No licence selected
Creative Commons Attribution (CC-BY) 4.0
Creative Commons Attribution Non Commercial (CC-BY-NC) 4.0
Public Domain (CC0 1.0)

Creative Commons Attribution Non

Section

[Basic Metadata](#)

[Geographic Coverage](#)

[Taxonomic Coverage](#)

[Temporal Coverage](#)

[Keywords](#)

[Associated Parties](#)

[Project Data](#)

[Sampling Methods](#)

[Citations](#)

[Collection Data](#)

[External links](#)

[Additional Metadata](#)

DOI (Digital Object Identifier)

Coleoptera collection (EC) of the Mus...

Occurrence dataset published by MNHN - Muséum national d'Histoire naturelle

4 537

Occurrences

[View occurrences](#)

Information

Stats

Activity

Summary

FULL TITLE

Coleoptera collection (EC) of the Muséum national d'Histoire naturelle (MNHN - Paris)

DOI [doi:10.15468/j3leej](https://doi.org/10.15468/j3leej)

DESCRIPTION

Catalog of Coleoptera specimens of the Muséum national d'Histoire naturelle (MNHN - Paris)

LANGUAGE OF METADATA

FRANCAIS

Occurrence download

doi:10.15468/dl.3cwyz7 8th October 2015

1 527 573

Occurrences

[Download](#)

PLEASE NOTE

The download result will be retained for as long as possible, but might be removed in the future.

The [doi:10.15468/dl.3cwyz7](https://doi.org/10.15468/dl.3cwyz7) will always resolve to this page, even if the download is removed.

Download details

IDENTIFIER

DOI [doi:10.15468/dl.3cwyz7](https://doi.org/10.15468/dl.3cwyz7)

CITE AS

GBIF.org (8th October 2015) GBIF Occurrence Download <http://doi.org/10.15468/dl.3cwyz7>

QUERY

COUNTRY *Peru*
GEOREFERENCED *true*

SIZE

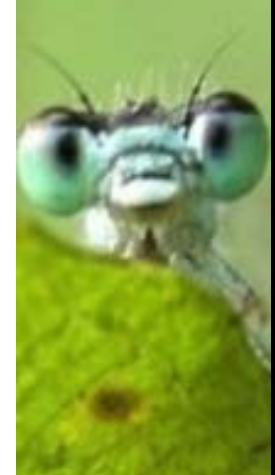
92.7 MB

FORMAT

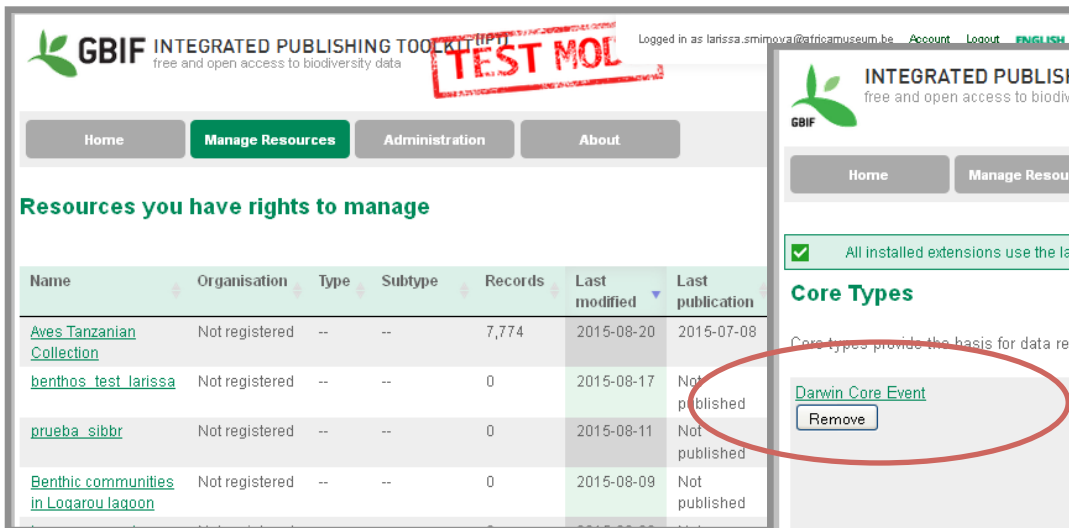
CSV

STATUS

Succeeded
[query latest data](#)



Publication de données d'échantillonnage



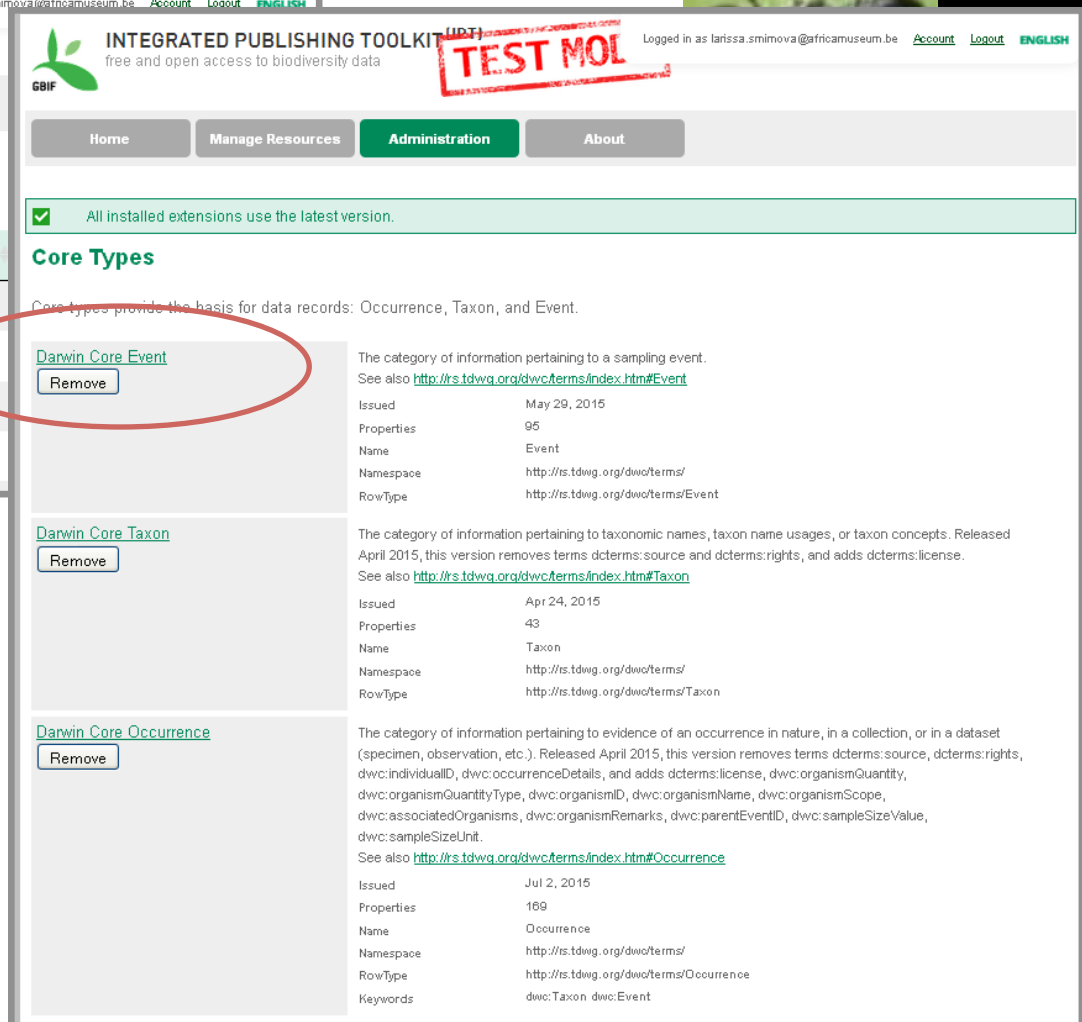
GBIF INTEGRATED PUBLISHING TOOLKIT (IPT)
free and open access to biodiversity data

Logged in as larissa.smimova@afriamuseum.be Account Logout ENGLISH

Home Manage Resources Administration About

Resources you have rights to manage

Name	Organisation	Type	Subtype	Records	Last modified	Last publication
Aves Tanzanian Collection	Not registered	--	--	7,774	2015-08-20	2015-07-08
benthos_test_larissa	Not registered	--	--	0	2015-08-17	Not published
prueba_sibbr	Not registered	--	--	0	2015-08-11	Not published
Benthic communities in Logarou lagoon	Not registered	--	--	0	2015-08-09	Not published



GBIF INTEGRATED PUBLISHING TOOLKIT (IPT)
free and open access to biodiversity data

Logged in as larissa.smimova@afriamuseum.be Account Logout ENGLISH

Home Manage Resources Administration About

All installed extensions use the latest version.

Core Types

Core types provide the basis for data records: Occurrence, Taxon, and Event.

[Darwin Core Event](#)
Remove

The category of information pertaining to a sampling event. See also <http://rs.tdwg.org/dwc/terms/index.htm#Event>

Issued May 29, 2015
Properties 95
Name Event
Namespace <http://rs.tdwg.org/dwc/terms/>
RowType <http://rs.tdwg.org/dwc/terms/Event>

[Darwin Core Taxon](#)
Remove

The category of information pertaining to taxonomic names, taxon name usages, or taxon concepts. Released April 2015, this version removes terms dcterms:source and dcterms:rights, and adds dcterms:license. See also <http://rs.tdwg.org/dwc/terms/index.htm#Taxon>

Issued Apr 24, 2015
Properties 43
Name Taxon
Namespace <http://rs.tdwg.org/dwc/terms/>
RowType <http://rs.tdwg.org/dwc/terms/Taxon>

[Darwin Core Occurrence](#)
Remove

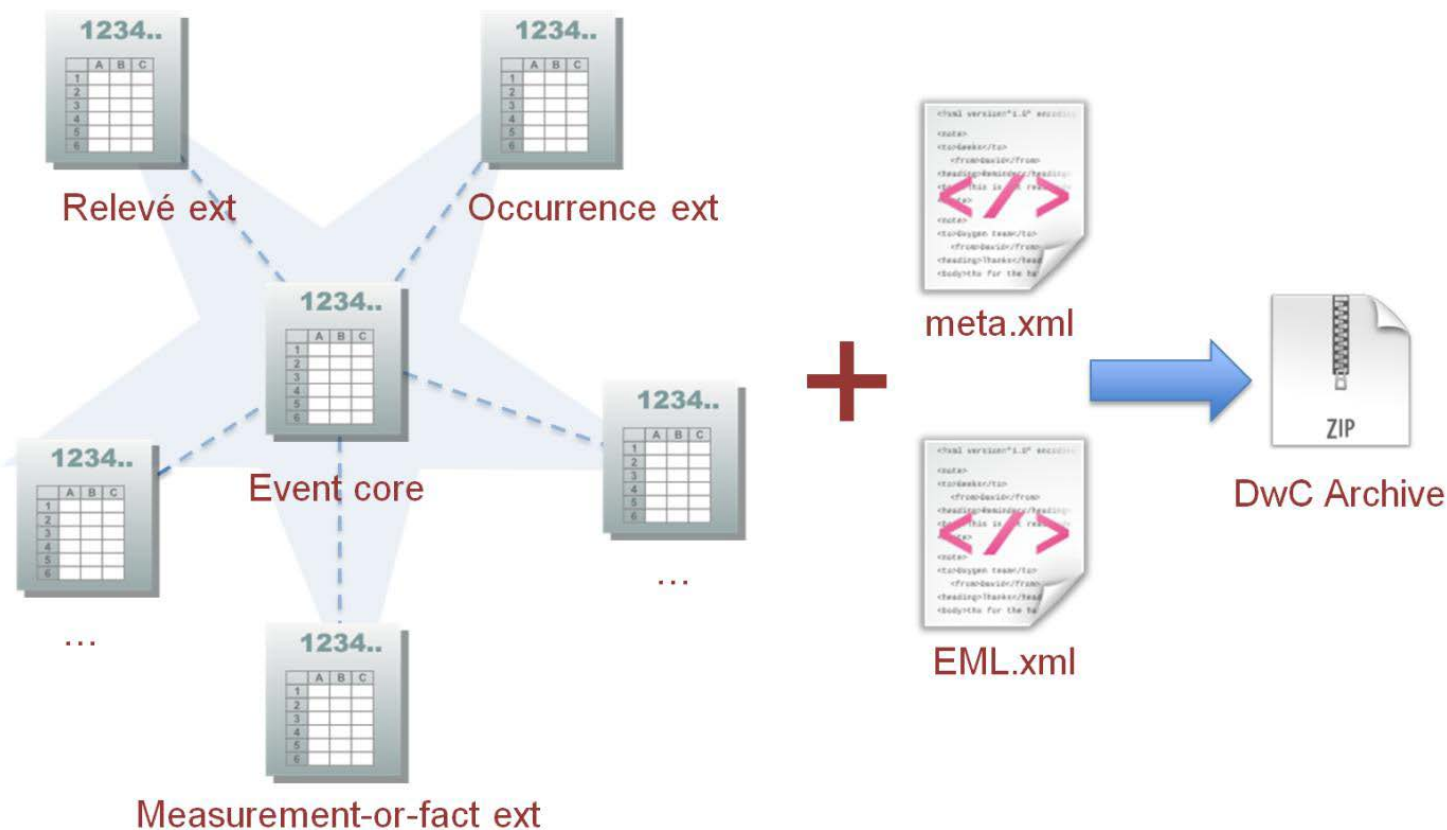
The category of information pertaining to evidence of an occurrence in nature, in a collection, or in a dataset (specimen, observation, etc.). Released April 2015, this version removes terms dcterms:source, dcterms:rights, dwc:individualID, dwc:occurrenceDetails, and adds dcterms:license, dwc:organismQuantity, dwc:organismQuantityType, dwc:organismID, dwc:organismName, dwc:organismScope, dwc:associatedOrganisms, dwc:organismRemarks, dwc:parentEventID, dwc:sampleSizeValue, dwc:sampleSizeUnit. See also <http://rs.tdwg.org/dwc/terms/index.htm#Occurrence>

Issued Jul 2, 2015
Properties 169
Name Occurrence
Namespace <http://rs.tdwg.org/dwc/terms/>
RowType <http://rs.tdwg.org/dwc/terms/Occurrence>
Keywords dwc:Taxon dwc:Event

Nouvelles fonctionnalités de l'IPT

- **Event core et extensions**
- Possibilité d'attribuer un DOI aux ressources
- Génération automatique de citation pour une ressource, incluant le numéro de version et le DOI
- Licences pour les jeux de données

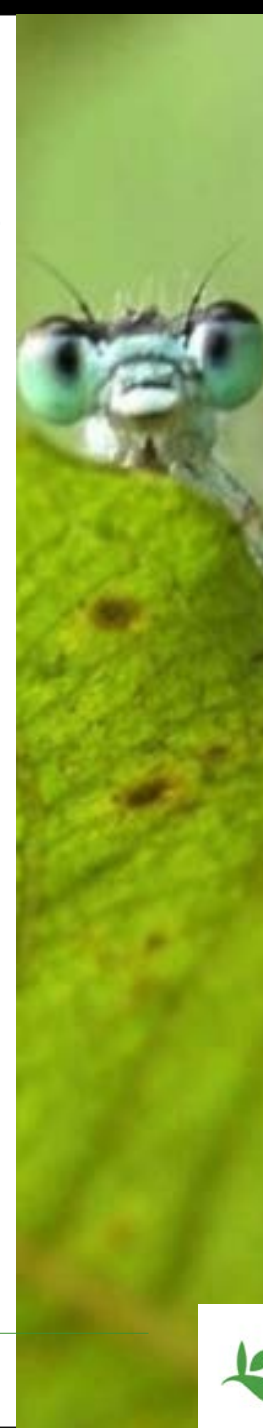
Archive Darwin Core pour les données d'échantillonnage



Termes Darwin Core pour les données d'échantillonnage

7 termes essentiels pour le mapping des
données d'échantillonnage :

1. eventID
2. parentEventID (nouveau)
3. samplingProtocol
4. sampleSize (nouveau)
5. sampleSizeUnit (nouveau)
6. organismQuantity (nouveau)
7. organismQuantityType (nouveau)





ACTUALITÉS



01/07/2015

Nouveaux groupes de travail GBIF sur l'adéquation des données à l'usage

Le GBIF a mis en place deux nouveaux groupes de travail pour améliorer l'utilisation des données accessibles via le réseau GBIF dans les domaines de l'agrobiodiversité et de la modélisation des répartitions d'espèces. Ces deux groupes, composés d'experts internationaux, auront pour tâche d'estimer la couverture et la complétude de ces données afin de recommander des bonnes pratiques pour améliorer la recherche et ses applications concrètes dans ces domaines d'études.

[En savoir plus](#)



GBIF

< || >
5 sur 5

LE GBIF FRANCE

En tant que membre du Système mondial d'information sur la biodiversité (GBIF) depuis sa création en 2001, la France s'engage à promouvoir l'accès libre et ouvert aux données sur la biodiversité, via Internet.

[En savoir plus](#)



AGENDA

Formation GBIF France dans le cadre de l'ECOSCOPE	15/09/2015 au 16/09/2015
Colloque Agreenum : Partage des données pour l'agriculture, l'alimentation et l'environnement	04/09/2015
ICCB-ECCB 2015 Conference	02/08/2015 au 06/08/2015
Our Common Future Under Climate Change	07/07/2015 au 10/07/2015

[Consulter l'agenda](#)

ACCÈS DIRECT

- » [Le GBIF](#)
- » [Portail de données](#)
- » [Formations](#)
- » [Créer son datapaper](#)



LES DONNÉES FRANÇAISES SUR LA BIODIVERSITÉ

Le portail français du GBIF ouvre l'accès aux données primaires sur la biodiversité fournies par des institutions françaises. Ces données d'occurrences d'espèces sont issues de collections ou d'observations de terrain et ont une distribution géographique mondiale.

CONSULTER LES 17 575 131 OCCURRENCES

Nom scientifique, nom vernaculaire, etc.



Recherche avancée

LES COLLECTIONS



Informations sur les collections françaises sur la biodiversité. Vous retrouvez la description, les contacts et autres informations pratiques sur les acteurs français principaux de la biodiversité.

Accéder aux collections



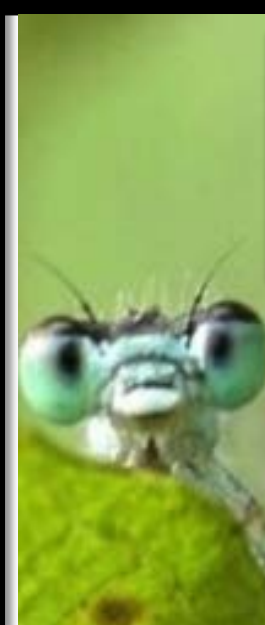
Accès aux données d'occurrences et informations sur les jeux de données publiés par les institutions ou collections participant au GBIF (licence, citation, etc.)

Accéder aux jeux de données



Exploration des occurrences géo-référencées (en cours de construction).

Explorer les occurrences





MÉTADONNÉES SUR LES INSTITUTIONS, LES COLLECTIONS ET LES PROJETS

Découvrez l'institution, les collections qu'elle contient et affichez les enregistrements de spécimens qui ont été informatisés. Actuellement, seules les collections de France partenaires sont affichées. Au fil du temps, cette liste sera élargie pour inclure toutes les collections d'histoire naturelle de {0}.

Cliquez sur un des bouton pour afficher uniquement ces organismes.

Toutes les collections

Show all 79 collections.



Flore

Plantes vasculaires, algues, lichens et bryophytes.



Faune

Mammifères, oiseaux, reptiles, poissons, amphibiens et invertébrés.



Mycètes

Champignons.



Micro-organismes

Protistes, bactéries, virus, champignons microscopiques et algues microscopiques.



Paléontologie

Organismes fossiles.



Carte **Liste**

Cliquez sur une épingle de la carte pour voir les collections à cet endroit. Utilisez les commandes de la carte pour zoomer sur une zone d'intérêt. Ou faites glisser la souris tout en maintenant la touche Maj enfoncée pour effectuer un zoom sur une zone.

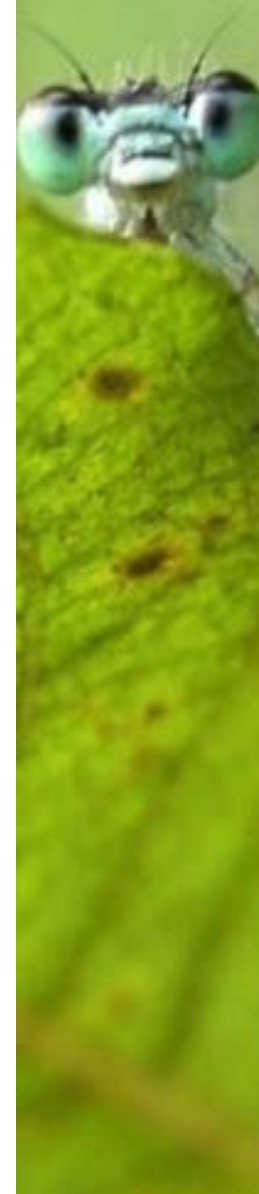


indique qu'il y a plusieurs collections à cet endroit.

79 collections in total.

61 collections are currently visible on the map.

9 collections cannot be mapped.



Merci de votre attention !

Equipe GBIF France

gbif@gbif.fr

Site web

www.gbif.fr

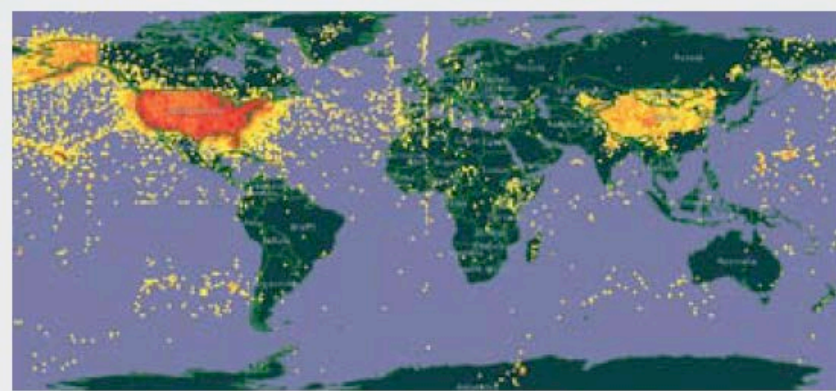
Twitter

[@gbiffrance](https://twitter.com/gbiffrance)



Qualité des données : détection des erreurs de géoréférencement

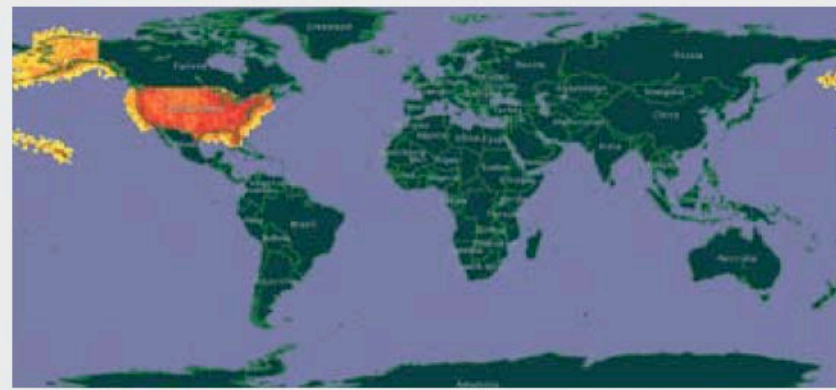
Avant 2011



En 2011



Depuis 2013



Biodiversity Data Quality Hub

<http://www.gbif.es/BDQ.php>

