



Journée ARAMIS 2016  
ISC Bron, 07 avril 2016

---

**Processus de publication des  
données primaires sur la  
biodiversité via les outils  
et le réseau GBIF**

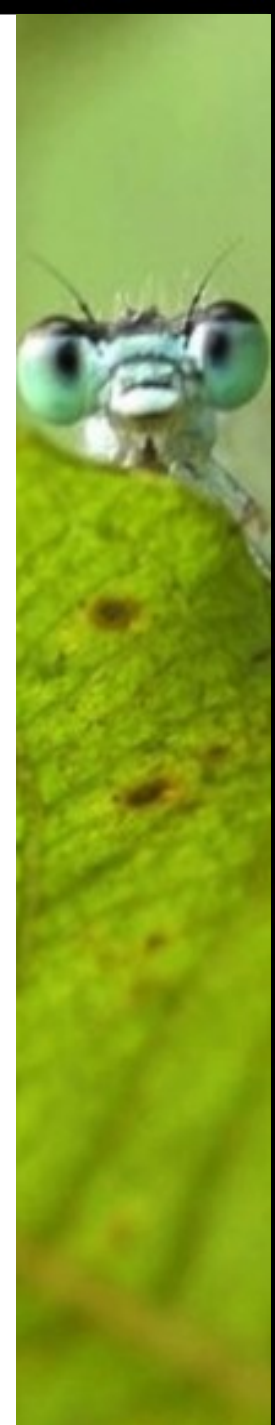
---

[gbif@gbif.fr](mailto:gbif@gbif.fr)

[www.gbif.org](http://www.gbif.org) / [www.gbif.fr](http://www.gbif.fr)

# Sommaire

- 1. Présentation du GBIF et de ses standards**
- 2. Integrated Publishing Toolkit (IPT)**
- 3. IPT : nouvelles fonctionnalités**



# Qu'est-ce que le GBIF?

Programme intergouvernemental créé en 2001,  
initiative du comité scientifique de l'OCDE

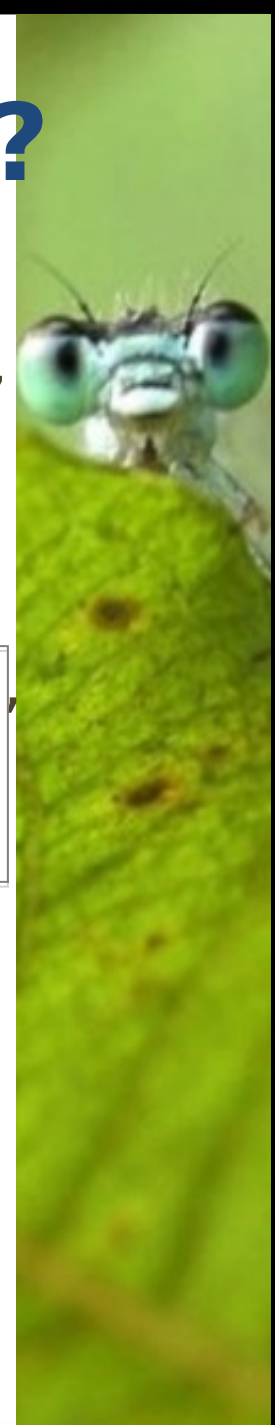
## Objectif

La diffusion **libre, gratuite et universelle**,  
via **Internet**,  
de données scientifiques et d'informations  
relatives à



## Moyen

Créer des systèmes  
interopérables, formant ainsi un  
réseau mondial de bases de  
données scientifiques sur la  
biodiversité.



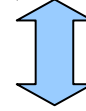
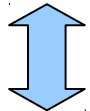
# Qui participe au GBIF ?

## Governing Board

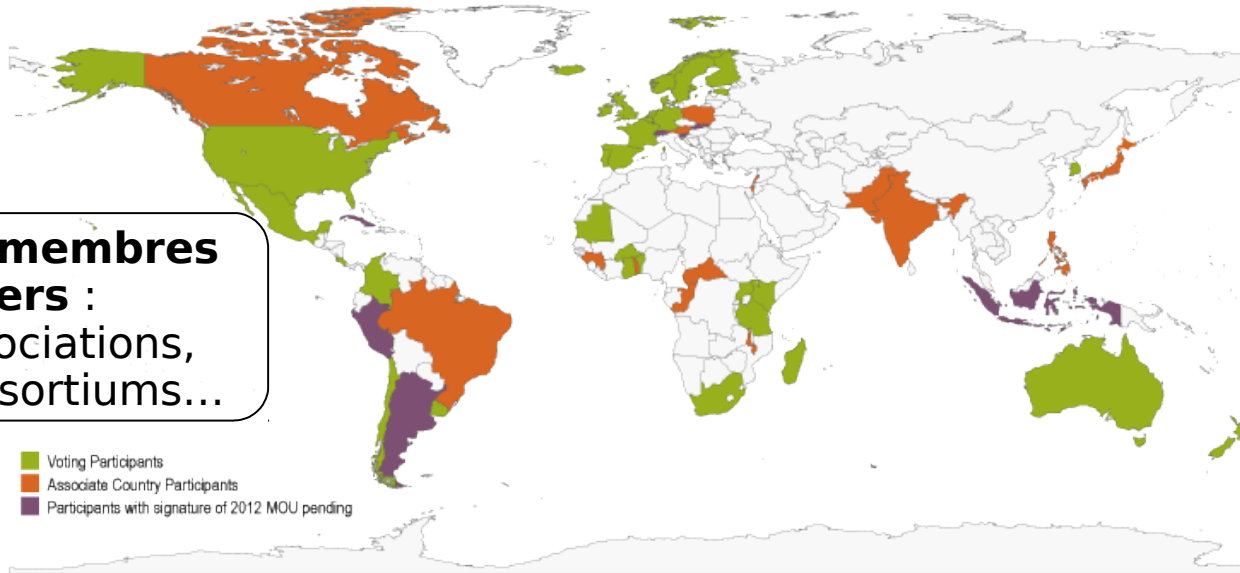
Comité exécutif  
Comité pour le budget  
Comité des noeuds participants  
Comité scientifique

## Secrétariat

Directeur  
Agents



## 94 Participants



**40 membres divers :**  
associations,  
consortiums...

■ Voting Participants  
■ Associate Country Participants  
■ Participants with signature of 2012 MOU pending

**54 pays**



# Types de données

# partagées

# via le GBIF

Collections d'herbiers  
et de muséums



Etudes de terrain,  
projets de monitoring

Observations de  
Science Participative  
ou Citoyenne

Données  
d'occurrences  
extraites de la

iNaturalist.org Observations Species Projects Places Guides People



Explore!  
Your World!



Learn!  
About Life!



Record!  
Add Observations!

### Mr. Wiscn's Flora of Northumberland, &c.

129

*Conferus setaceus*, Eng. Bot. 1689; Dillwyn, t. 82.  
Among the rejectments on the coast, N. and D. Near Berwick.—Dr. G. Johnston.

2. *C. epistictus*.  
Gr. Fl. Eds. 312; *Conferus epistictus*, Eng. Bot. 1479; Dillwyn, t. 54.  
On the beach at Hartlepool, D.

3. *C. ovalis*.  
Hook. Fl. Scot. 84; *Conferus ovalis*, Dillwyn, 99; Eng. Bot. 1814; Lightfoot, 982.  
On the coast near Hartley, and at Newbiggin, N. In Manhaven near Whitburn, D.

239. CLADOSTEPHUS.

1. *C. verticillatus*.  
Gr. Fl. Eds. 312; *Conferus verticillatus*, Dillwyn, t. 55; Eng. Bot. 1718.  
On the beach at Sunderland and Hartlepool, D.

2. *C. spongiosus*.  
Gr. Fl. Eds. 319; Berwick Flora, ii. 245; *Conferus spongiosus*, Eng. Bot. 2457; Dillwyn, t. 42.  
On rocks near Hartley, N. Near Hartlepool, Whitburn, and Sunderland, D. Near Berwick.—Dr. G. Johnston.

Sunderland, and on the bark of the Holly in Gibside and Ravensworth Woods, D. On rocks at Howley, N.—W. C. Trevelyan, Esq. Near Berwick.—Dr. G. Johnston.

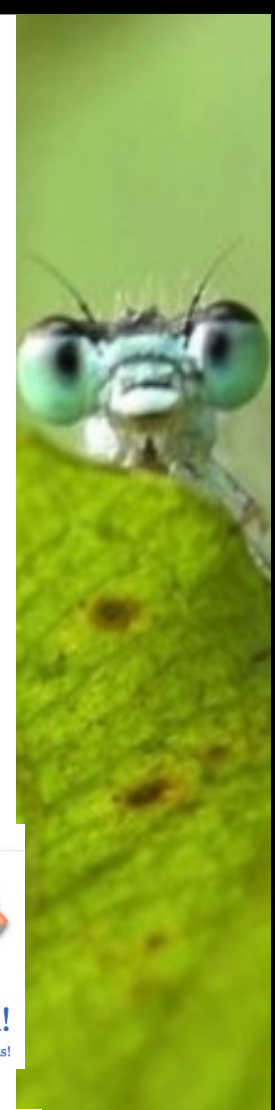
2. *A. linearis*.  
Sprung-Syst. Veg. iv. 345; Berwick Flora, ii. 245.  
On the bark of Ash Trees.—Dr. G. Johnston.

241. CONFERVA.

1. *C. fortunei*.  
Gr. Fl. Eds. 315; Eng. Bot. 2220; Dillwyn, t. 46; Berwick Flora, ii. 253.  
Dillwyn, t. 76.

2. *C. flaccida*.  
Gr. Fl. Eds. 316; Dillwyn, p. 53, t. C.; Eng. Bot. 2310; Berwick Flora, ii. 253; *C. curvis*, Dillwyn, t. 76.  
On *Fucus nodosus* and *F. vesiculosus*, N. and D. At Seaton, D.—Mr. Backhouse. Near Berwick.—Dr. G. Johnston.

3. *C. fasciata*.  
Gr. Fl. Eds. 316; Dillwyn, t. 66; Berwick Flora, ii. 253.  
Parasitical on *Fucus nodosus* and *F. vesiculosus*.





# Global Biodiversity Information Facility

Free and Open Access to Biodiversity Data

652,694,361

OCCURRENCES

1,634,951

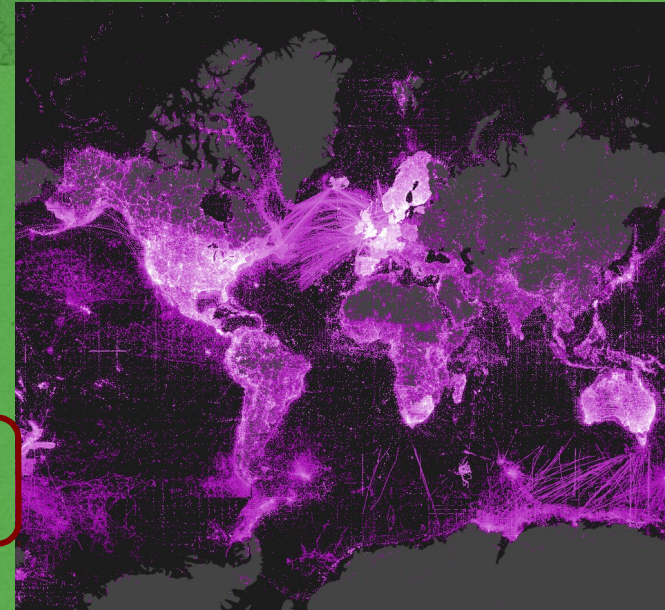
SPECIES

15,743

DATASETS

803

DATA PUBLISHERS



Sharing biodiversity data for re-use

[Learn about GBIF](#)

[Publish your data through GBIF](#)

[Technical infrastructure](#)

Providing evidence for research and decisions

[Using data through GBIF](#)

[Enabling biodiversity science](#)

[Supporting global targets](#)

Collaborating as a global community

[Current Participants](#)

[How GBIF is funded](#)

[Enhancing capacity](#)

Search news items and information pages...

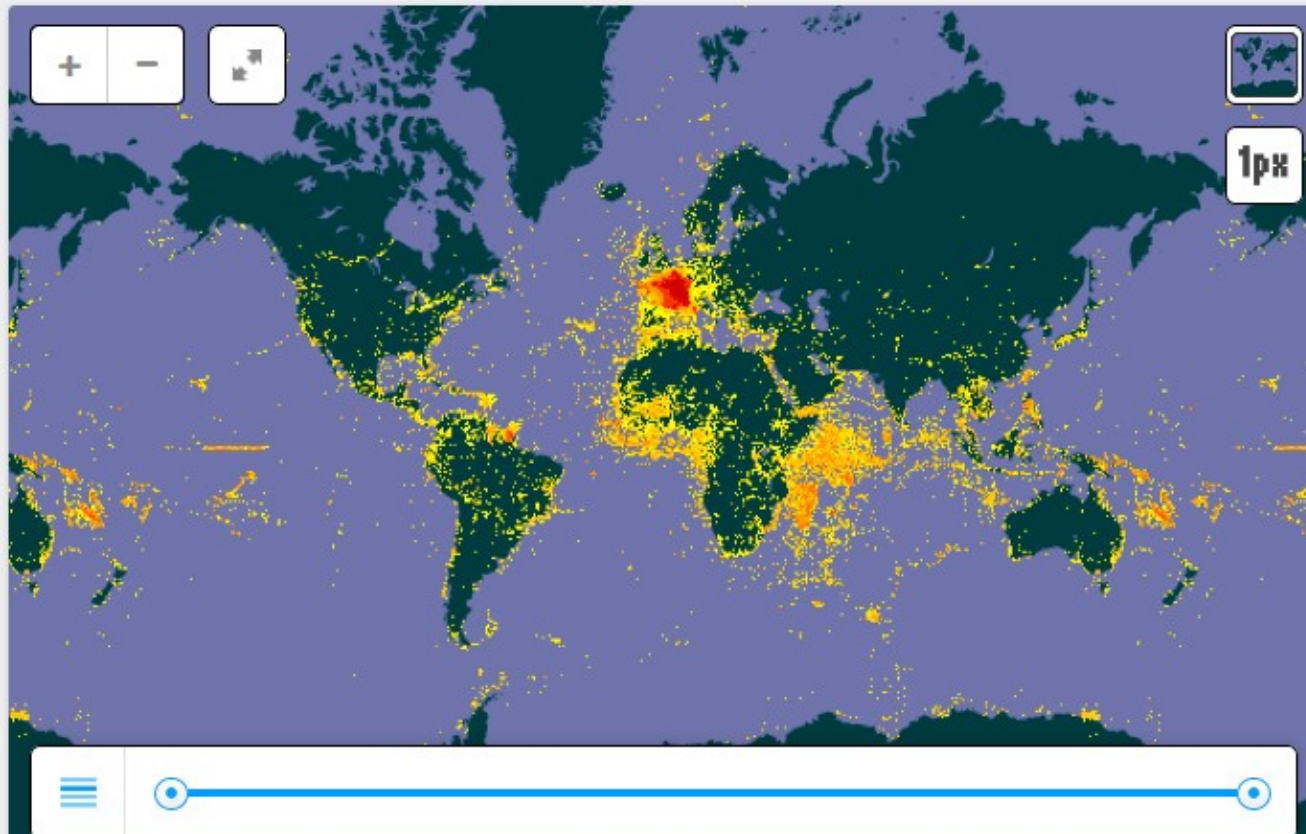
Search 🔍



# France

A GBIF Voting Participant from Europe

Names of countries, territories and islands are based on the **ISO 3166-1** standard.

[Summary](#)[Data About](#)[Data Publishing](#)[Participation](#)[News and Events](#)[Publications](#)

## Data from France

- 152 occurrence datasets with 39,634,545 records.
- 1 checklist dataset with 281,367 records.
- 2 metadata-only datasets.
- France publishes data covering 248 countries, territories and islands.

[View records shown on the map](#)

# Infrastructure

How GBIF works as a global informatics infrastructure

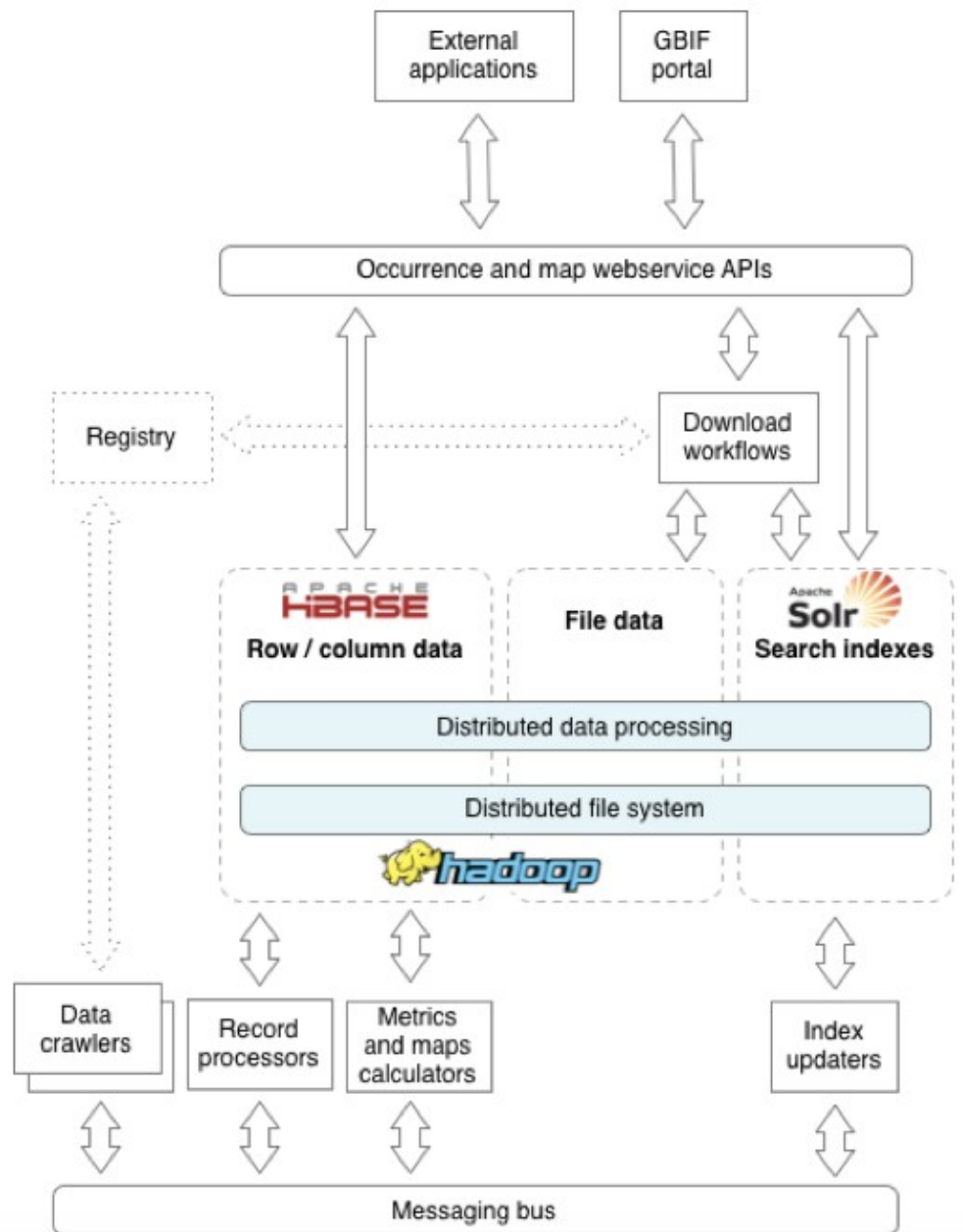
Summary | Registry | Occurrences | Data processing

## About

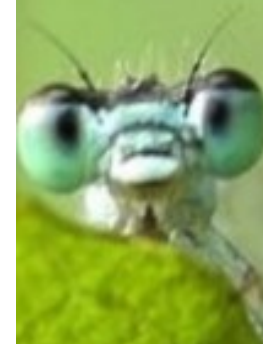
The GBIF informatics architecture provides an open platform for biodiversity databases around the world.

The distributed infrastructure spans across the hundreds of GBIF enabling users to discover, access, integrate and help shared on the network.

The GBIF architecture encompasses well-known community and protocols enabling interoperability at global scale. As a growing number of tools and workflows are able to connect the network.



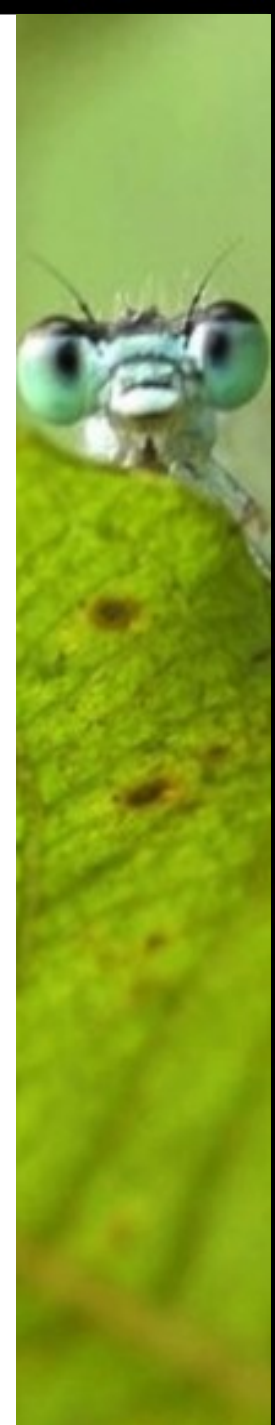




- ⇒ Tous les outils développés par le GBIF sont **libres et open source**, et utilisent des **standards internationaux**.
- ⇒ **Toutes les données peuvent être téléchargées** (pas de restriction de taille) et **réutilisées par d'autres sites ou portails** (via les API).
- ⇒ **Utilisation:** ces données, corrélées à des données environnementales, contribuent à la recherche scientifique et aident à la prise de décisions dans les domaines suivants :
1. Espèces menacées, migratrices et invasives
  2. Impacts du changement climatique
  3. Politiques de conservation
  4. Gestion des ressources naturelles
  5. Agriculture, gestion forestière, pêche et

# Sommaire

- 1. Présentation du GBIF et de ses standards**
- 2. Integrated Publishing Toolkit (IPT)**
- 3. IPT : nouvelles fonctionnalités**

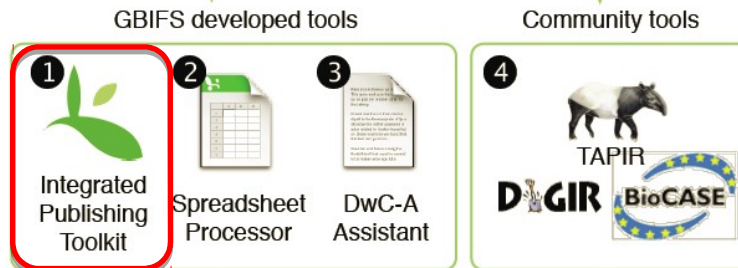


# Publier des données via le GBIF

Which type of data?



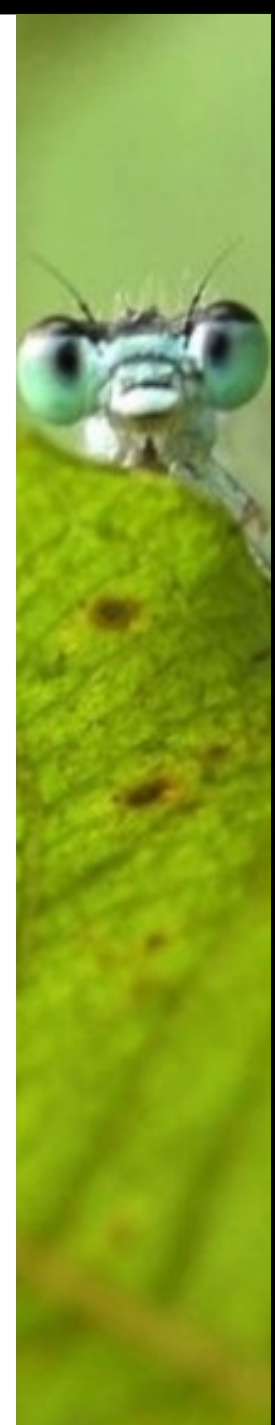
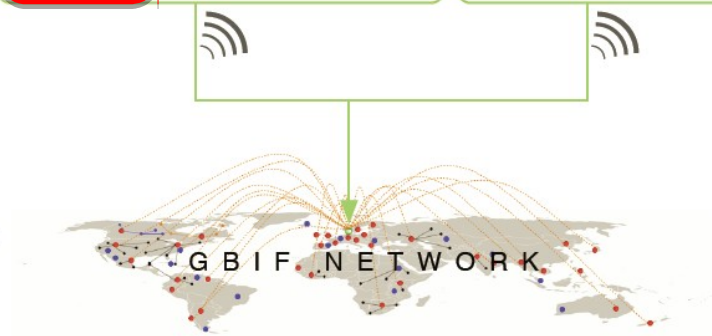
Select a tool



Publish your data

Register with GBIF

Discovery through the Portal



# Standards de données



Métadonnées



Ecological Metadata  
Language (**EML**)

- *Description riche des jeux de données*
- *Profil de métadonnées dans le GBIF*

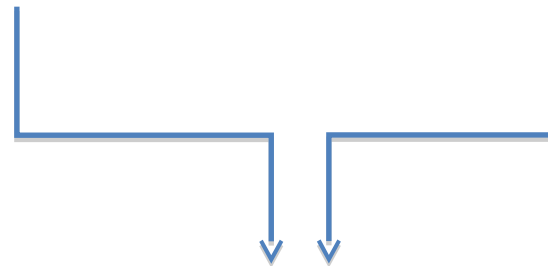


國語英名蝶  
*Eudocima homaena* (Hübner, 1823)  
Female  
27-XI-2008, Siargayen,  
Sorsogon, Rapel City, Taiwan  
identified by Bettaman

Données primaires  
sur la biodiversité



Données  
taxonomiques

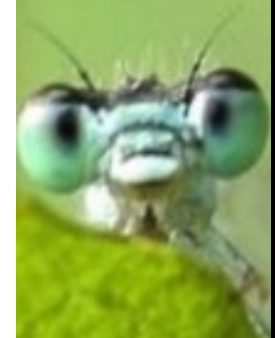


**Darwin Core**

- *190 termes*
- *Ratifié en 2009 (TDWG)*
- *Fichiers texte*
- *Extensions thématiques*

**Ou ABCD (TDWG)**

- *>1200 concepts*
- *utilisé par Biocase et Tapir*

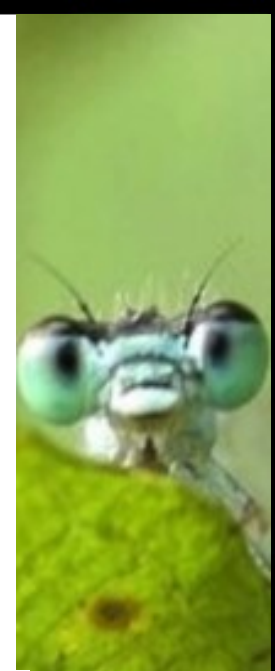
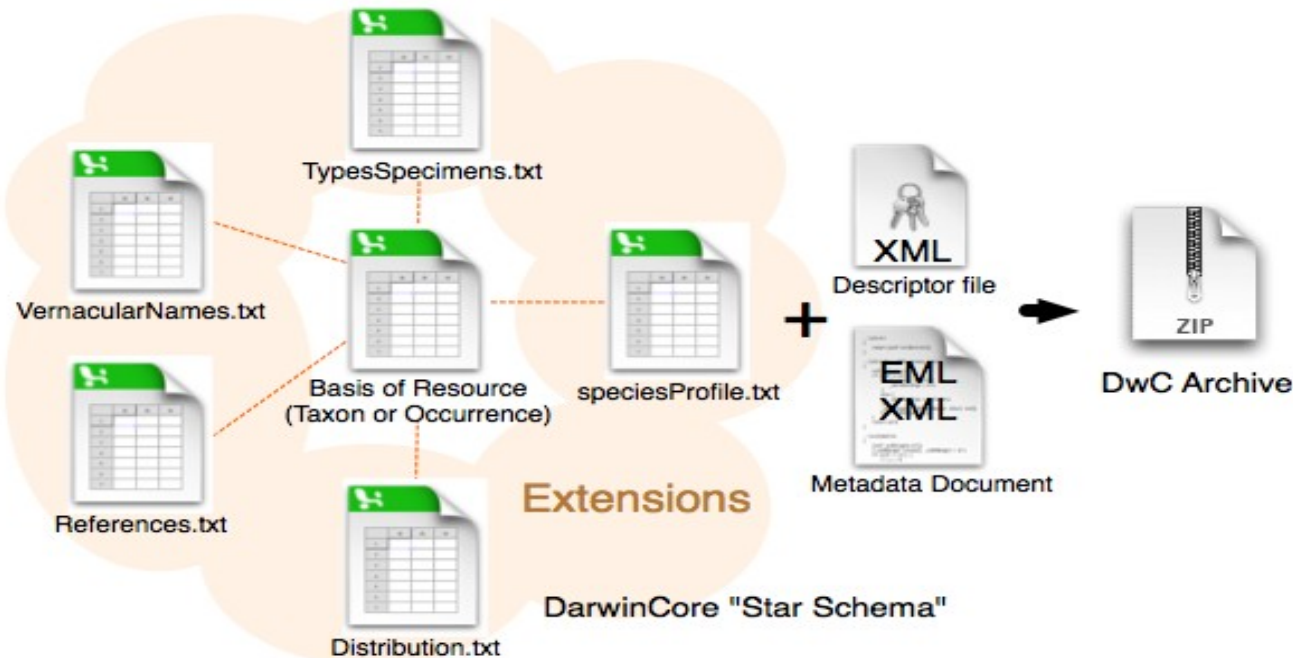


# Archive Darwin Core

Contenu de l'archive :

- Une DwC-A = un jeu de données
- Dossier zippé contenant un ou plusieurs fichiers texte standardisés en Darwin Core
- Occurrences, données d'échantillonnage ou données taxonomiques
- Métadonnées au format EML

## Darwin Core Archive Components

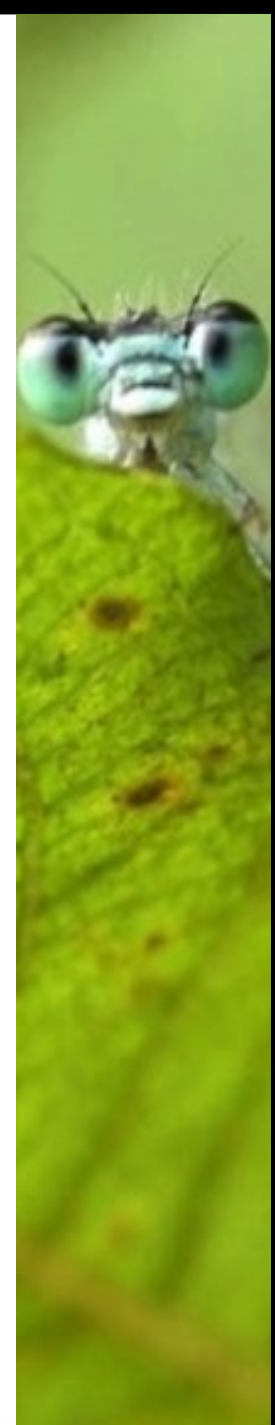


# Termes Darwin Core

Darwin Core = standard de données  interopérabilité

## Termes obligatoires :

- **institutionCode** (ex : MNHN) : nom ou acronyme de l'institution ayant la responsabilité de la donnée
- **collectionCode** (ex : Entomologie) : nom ou acronyme du jeu de données ou de la collection d'où il provient
- **catalogNumber** (ex : PPG-CF-00001) : identifiant (si possible unique) de chaque occurrence dans le jeu de données ou la collection
- **scientificName** (ex: *Canis lupus*) : nom scientifique complet avec date et auteur (si connus)



## Integrated Publishing Toolkit (IPT)

A GBIF tool to enable the publishing of biodiversity datasets

v2.3

(Latest version)

[Download](#)

[Summary](#)

[Stats](#)

[Releases](#)

### About the IPT

The Integrated Publishing Toolkit (IPT) is a free open source software tool written in Java that is used to publish and share biodiversity datasets through the GBIF network. Designed for interoperability, it enables the publishing of content in databases, Microsoft Excel spreadsheets, or text files using open standards namely the [Darwin Core](#) and the [Ecological Metadata Language](#). You can also use a 'one-click' service to convert your metadata into a draft [data paper manuscript](#) for submission to a peer-reviewed journal.



Since v2.2, the IPT has been capable of automatically connecting with either DataCite or EZID to assign DOIs to datasets. This new feature makes biodiversity data easier to access on the Web and facilitates tracking its re-use. You may read more about this and other new features introduced in version 2.2 [here](#).

The core development of the IPT happens at the GBIF Secretariat, but the coding, documentation, and internationalization are a community effort and everyone is welcome to join in. New versions incorporate the feedback from the people who actually use the

### See also

#### RESOURCES

- [User Manual \(es\)](#)
- [Mailing List](#)
- [Wiki](#)
- [FAQs](#)

#### FEEDBACK

- [Report a Bug](#)
- [Request an Enhancement](#)

# IPT setup

## Disclaimer

Since IPT version 2.2, publishers are required to assign one of three machine-readable rights declarations to their data. If you cannot agree to publish your data under a CC0 1.0, CC-BY 4.0 or CC-BY-NC 4.0 declaration, we recommend that you use version 2.1.1 of the IPT for now.

GBIF will begin working with existing publishers to implement and enforce this requirement across the network during 2015. If you are unable to choose one of the three options, and your dataset contains occurrence data, you will not be able to register your dataset with GBIF or make it globally discoverable through GBIF.org. For background on this decision, [click here](#).

I have read and understood the disclaimer

## IPT data directory

To use the IPT you must select a directory where the IPT will store its configuration information - called the IPT data directory.

Please select an empty, writable folder or an existing IPT data directory. Do not select a folder that is vulnerable to other processes, such as /tmp, which may be emptied on a system restart. This folder should be backed up regularly in keeping with a disaster recovery plan.

For example, use a path such as "C:\datadir" for Windows environments or "/usr/datadir" for Unix-like environments such as Linux, Mac OS X.



## IPT setup part II

Please provide additional information for the basic IPT setup.

You have successfully created a new data directory.

### Default administrator

The password for the default administrator account can be modified later on, but the email cannot be changed without removing and re-creating the user.

Email

First Name

Last Name

Password

Verify Password

### IPT Mode

Select the mode you would like to run the IPT in. The IPT mode decides whether or not the hosted resources will be indexed for public search access by GBIF. GBIF recommends IPT administrators try Test mode first in order to understand the registration process, and then reinstall in Production mode for formal data publishing. **Warning:** for a given installation, this selection is final and cannot be changed later on. To switch from test to production mode or vice versa, you will have to reinstall your IPT and repeat any configurations you made.

**Test** mode is for evaluating the IPT or running it in a training scenario. Resources registered with GBIF will go into a test registry and will never be indexed. All DOIs minted for resources in test mode should use a test prefix (e.g. 10.5072 for DataCite), meaning they are temporary.

**Production** mode is for publishing resources formally. Resources registered with GBIF go into the GBIF Registry and will be indexed. DOIs minted for resources cannot be deleted, and require resources to remain publicly accessible.

IPT mode:  Test  Production

### Base URL

Base URL for this IPT

Proxy URL

Save



Home

Manage Resources

**Administration**

About



IPT settings ⓘ

[Publish all resources](#)



Users accounts



GBIF registration options



Organisations

The IPT must be registered with GBIF before associating organisations



Core Types and Extensions



Logs

Home

**Manage Resources**

Administration

About

## Resources you have rights to manage

Filter:

Name	Organisation	Type	Subtype	Records	Last modified	Last publication	Next publication	Visibility	Author
<a href="#">Base de données</a>	Not registered	Occurrence	--	0	2015-09-24	Not published	--	Private	Sophie Pamerlon
<a href="#">LAGPLON - Polynésie française</a>	SPN - Service du Patrimoine naturel, Muséum national d'Histoire naturelle, Paris	Occurrence	--	150	2015-09-21	2015-09-21	--	Public	Sophie Pamerlon
<a href="#">LAGPLON - Nouvelle-Calédonie</a>	SPN - Service du Patrimoine naturel, Muséum national d'Histoire naturelle, Paris	Occurrence	--	4,791	2015-09-21	2015-09-21	--	Public	Sophie Pamerlon
<a href="#">test_sample_data</a>	Not registered	Sampling event	--	0	2015-09-17	Not published	--	Private	Sophie Pamerlon
<a href="#">Donnees ONF Faune-Flore-Fonge</a>	SPN - Service du Patrimoine naturel, Muséum national d'Histoire naturelle, Paris	Occurrence	--	637,398	2015-09-11	2015-09-11	--	Public	Sophie Pamerlon
<a href="#">INPN - Données flore des CBN agrégées par la FCBN</a>	SPN - Service du Patrimoine naturel, Muséum national d'Histoire naturelle, Paris	Occurrence	--	20,999,334	2015-07-17	2015-07-17	--	Public	Sophie Pamerlon
<a href="#">Données flore des CBN agrégées par la FCBN</a>	Not registered	Metadata-only	--	0	2015-07-17	Not published	--	Private	Sophie Pamerlon
<a href="#">Herbier G. Garapin (BOUM)</a>	Muséum d'Histoire Naturelle de Bourges	Occurrence	Specimen	712	2015-02-18	2015-02-16	--	Public	Sophie Pamerlon
<a href="#">fundiv france database</a>	Not registered	Occurrence	--	3,257	2015-02-18	2015-02-18	--	Public	Sophie Pamerlon



## Create New Resource

You can create a new blank resource, upload an existing resource saved as a zipped Darwin Core archive, or upload an existing IPT resource using its zipped resource configuration folder. Please refer to the User Manual for more specific instructions. A short name is required as an identifier for the resource within this IPT installation. Please use only alphanumeric characters, hyphens, or underscores.

### Shortname

### Type



Select a type (optional) ▾

### Optional archived resource to load:

Choisissez un fichier Aucun fichier choisi

Create

## Overview: [LAGPLON - Polynésie française](#)

This is the overview page for the *LAGPLON - Polynésie française* resource.

### Source Data

Parcourir... Aucun fichier sélectionné.

Connect to database

Clear

Your source data files and SQL sources for generating a Darwin Core Archive.

Not modified since last publication

**data [file]** 77.4 KB, 150 rows, 37 columns. Sep 17, 2015

Edit

### Darwin Core Mappings

Darwin Core Occurrence

Add

Your mapping between the source data and Darwin Core terms.

Not modified since last publication

Core

**Darwin Core Occurrence** 35 terms mapped to data.

Eye icon Edit

### Metadata

Edit

Your resource metadata.

Not modified since last publication

### Published Versions

Publish

Auto-publishing

Select interval

A preview of your pending published version compared with the current version if existing.

Version

Current version

1.2 View ✓

Pending version

1.3 Preview

Published on

Sep 21, 2015

Publication log

Download

### Visibility **Registered**

This public resource is registered with GBIF meaning that it is globally discoverable via the [GBIF website](#).

GBIF UUID

[eed49c61-2085-46c4-8d4f-d2cda50fd404](#)

Organisation

[SPN - Service du Patrimoine naturel, Muséum national d'Histoire naturelle, Paris](#)

Organisation Contact

Frédéric Vest, vest@mnhn.fr

Endorsing Node

[GBIF France](#)

### Resource Managers

Managers granted permission to modify this resource.

Add

Creator

Sophie Pamerlon, pamerlon@gbif.fr

Delete



Home

Manage Resources

Administration

About

Resource Title test\_sp

## Source Data

Edit your source data format

### Source Name

Readable

Columns 45

File `/var/www/private/ipt/ipt_data/resources/test_sp/sources/occurrence_gbif_potato_20130513copie.txt`

Size 39 KB

Rows 99

Modified 09/01/14

Source log [Download](#)

Analyze

Preview

### Number of Header Rows

### Field Quotes

### Date Format

Save

Cancel

Delete source file

### Field Delimiter

### Character Encoding



- Home
- Manage Resources**
- Administration
- About

## Overview: test\_sp

This is the overview page for the test\_sp resource. Please start by uploading and mapping source data to generate and publish a Darwin Core archive. Dont forget to fill in the mandatory metadata. Published resources can be registered with the GBIF Network. Registered resources can be removed, but they cannot be reverted to a private state.

### Source Data

Choisissez un fichier Aucun fichier choisi

Your source data files for generating a Darwin Core Archive. You can upload delimited text files (csv, tab, and files using any other delimiter) either directly or compressed (zip or gzip). To (re)upload a file, please select the local file then click "Add". Alternatively, you can configure SQL views to databases in your local network. To create a new SQL source, please click "Connect to database" without any file chosen.

**occurrence\_gbif\_potato\_20130513cople** 39 KB, 99 rows, 45 columns. 09/01/14

[file]

### Darwin Core Mappings

Darwin Core Occurrence

Your mapping between the source data and Darwin Core terms.

<b>Darwin Core Occurrence</b>	43 terms mapped to occurrence_gbif_potato_20130513cople	<input type="button" value="Edit"/>
-------------------------------	---	-------------------------------------

### Metadata

description

**Keywords** Occurrence

### Published Release

Auto-publishing

When publishing a new release, a new EML version, RTF version, and a Darwin Core Archive (DwC-A) will be created. A DwC-A bundles all source files with mappings and metadata in one zipped archive.

### Visibility *Private*

This resource is private to managers. To make this resource available to everyone, please make it public.

### Resource Managers

Resources can be managed by several managers. You can grant other managers permission to modify test\_sp.

**Creator** Sophie Pamerlon, pamerlon@gbif.fr



⚠ IndividualCount is mapped to values with the wrong data type.  
 maximumDepthInMeters is mapped to values with the wrong data type.  
 maximumElevationInMeters is mapped to values with the wrong data type.  
 minimumDepthInMeters is mapped to values with the wrong data type.  
 minimumElevationInMeters is mapped to values with the wrong data type.

Resource Title **LAGPLON - Polynésie française**

### Field Index

- Record Level
- Occurrence
- Event
- Location
- GeologicalContext
- Identification
- Taxon
- Unmapped columns

### Field Filters

Hide unmapped fields

Save Delete Back

## ① Mapping Source Data

Mapping source data data to core extension: Darwin Core Occurrence.

① occurrenceID	id	<input type="text"/>
Source Sample: 1   2   3   4   5		
① Filter	AfterTranslation	<input type="text"/>

## Record Level

① dcterms:type	<input type="text"/>	<input type="text"/>
① dcterms:modified	<input type="text"/>	<input type="text"/>
① dcterms:language	<input type="text"/>	<input type="text"/>
① dcterms:rights	<input type="text"/>	<input type="text"/>
① dcterms:rightsHolder	<input type="text"/>	<input type="text"/>
① dcterms:accessRights	<input type="text"/>	<input type="text"/>
① dcterms:bibliographicCitation	<input type="text"/>	<input type="text"/>
① institutionID	<input type="text"/>	<input type="text"/>
① collectionID	collectionID	<input type="text"/>
Source Sample: 38   38   38   38   38		
Translation: <input type="button" value="Add"/>		
① datasetID	datasetID	<input type="text"/>
Use resource DOI <input type="checkbox"/>		
Source Sample: LAGPLON - Polynésie française   LAGPLON - Polynésie française   LAGPLON - Polynésie française   LAGPLON - Polynésie française   LAGPLON - Polynésie française		
Translation: <input type="button" value="Add"/>		



Source Sample: Agariciidae | Agariciidae | Halimedaceae | Halimedaceae | Halimedaceae

Translation:

**genus**

Source Sample: Gardineroseris | Pavona | Halimeda | Halimeda | Halimeda

Translation:

**subgenus**

**specificEpithet**

**infraspecificEpithet**

**taxonRank**

**verbatimTaxonRank**

**scientificNameAuthorship**

**vernacularName**

**nomenclaturalCode**

**taxonomicStatus**

**nomenclaturalStatus**

**taxonRemarks**

## Field Index

Record Level

Occurrence

Event

Location

GeologicalContext

Identification

Taxon

Unmapped columns

## Field Filters

Hide unmapped fields

## Unmapped columns

The following columns of the source are not mapped to any field in this extension:

- id
- acceptedTaxonName

## Overview: [LAGPLON - Polynésie française](#)

This is the overview page for the *LAGPLON - Polynésie française* resource.

### Source Data

Parcourir... Aucun fichier sélectionné.

Connect to database

Clear

Your source data files and SQL sources for generating a Darwin Core Archive.

Not modified since last publication

**data [file]** 77.4 KB, 150 rows, 37 columns. Sep 17, 2015

Edit

### Darwin Core Mappings

Darwin Core Occurrence

Add

Your mapping between the source data and Darwin Core terms.

Not modified since last publication

Core

**Darwin Core Occurrence** 35 terms mapped to data.

Eye icon Edit

### Metadata

Edit

Your resource metadata.

Not modified since last publication

### Published Versions

Publish

Auto-publishing

Select interval

A preview of your pending published version compared with the current version if existing.

Version

Current version

1.2

View



Pending version

1.3

Preview

Published on

Sep 21, 2015

Publication log

Download

-

### Visibility **Registered**

This public resource is registered with GBIF meaning that it is globally discoverable via the [GBIF website](#).

GBIF UUID

[eed49c61-2085-46c4-8d4f-d2cda50fd404](#)

Organisation

[SPN - Service du Patrimoine naturel, Muséum national d'Histoire naturelle, Paris](#)

Organisation Contact

Frédéric Vest, [vest@mnhn.fr](mailto:vest@mnhn.fr)

Endorsing Node

[GBIF France](#)

### Resource Managers

Add

Managers granted permission to modify this resource.

Creator

Sophie Pamerlon, [pamerlon@gbif.fr](mailto:pamerlon@gbif.fr)

Delete

## Basic Metadata

Please enter all the mandatory properties on the Basic Metadata page, and then continue entering metadata in the other pages that are applicable to your resource. The more metadata you provide, the greater the chance that your resource will be found, reused by other researchers, and cited.

Title\*

Publishing Organisation\*

Type\*

Metadata Language\*

Update Frequency\*

Subtype

Data Language\*

Data Licence\*



This work is licensed under a [Creative Commons Attribution \(CC-BY\) 4.0 License](#).

## Description\*

[\[ Remove this Paragraph \]](#)

Ce jeu de données contient toutes les données de LAGPLON concernant la Polynésie française. L'intégration de ces données dans l'INPN s'est faite dans le cadre du programme IPRECOR.  
Créé en 1975 par le service plongée de l'ORSTOM (Office de la Recherche Scientifique et Technique Outre-Mer) de Nouméa, LAGPLON est un système d'information de la biodiversité marine des récifs et lagons de Nouvelle-Calédonie et d'autres régions de l'Indo-Pacifique. Depuis quelques années

[\[ Add new Paragraph \]](#)

## Resource Contacts\*

[\[ Remove this resource contact \]](#)

First Name

Last Name\*

Position\*

Organisation\*

## Section

[Basic Metadata](#)

[Geographic Coverage](#)

[Taxonomic Coverage](#)

[Temporal Coverage](#)

[Keywords](#)

[Associated Parties](#)

[Project Data](#)

[Sampling Methods](#)

[Citations](#)

[Collection Data](#)

[External links](#)

[Additional Metadata](#)

# Gestion des ressources

## Source Data

Aucun fichier choisi

Your source data files for generating a Darwin Core Archive. You can upload delimited text files (csv, tab, and files using any other delimiter) either directly or compressed (zip or gzip). To (re)upload a file, please select the local file then click "Add". Alternatively, you can configure SQL views to databases in your local network. To create a new SQL source, please click "Connect to database" without any file chosen.

**occurrence\_gbif\_potato\_20130513cople** 39 KB, 99 rows, 45 columns. 09/01/14   
[file]

## Darwin Core Mappings

Your mapping between the source data and Darwin Core terms.

**Darwin Core Occurrence** 43 terms mapped to occurrence\_gbif\_potato\_20130513cople

## Metadata

description

**Keywords** Occurrence

## Published Release

When publishing a new release, a new EML version, RTF version, and a Darwin Core Archive (DwC-A) will be created. A DwC-A bundles all source files with mappings and metadata in one zipped archive.

Auto-publishing  ⓘ

Visibility **Private**

Rendre public

editors. To make this resource available to everyone, please make it public.

## Resource Managers

Resource:  permission to modify test\_sp.

Creator:

Ajouter un  
questionnaire

## Source Data

Choisissez un fichier Aucun fichier choisi

Connect to database

Clear

Your source data files for generating a Darwin Core Archive. You can upload delimited text files (csv, tab, and files using any other delimiter) either directly or compressed (zip or gzip). To (re)upload a file, please select the local file then click "Add". Alternatively, you can configure *SQL views* to databases in your local network. To create a new SQL source, please click "Connect to database" without any file chosen.

**occurrence\_gbif\_potato\_20130513copie** 39 KB, 99 rows, 45 columns. 09/01/14  
[file]

Edit

## Darwin Core Mappings

Darwin Core Occurrence

Add

Your mapping between the source data and Darwin Core terms.

**Darwin Core Occurrence**

43 terms mapped to  
occurrence\_gbif\_potato\_20130513copie

Edit

## Metadata

Edit

description

**Keywords**

Occurrence

## Published Release

Publish

Publier le jeu de données

Auto-publishing Select interval

on, RTF version, and a Darwin Core Archive (DwC-A) will be created. A metadata in one zipped archive.

## Visibility *Private*

Public

This resource is private to managers. To make this resource available to everyone, please make it public.

## Resource Managers

Add

Resources can be managed by several managers. You can grant other managers permission to modify test\_sp.

**Creator**

Sophie Pamerlon, pamerlon@gbif.fr

Delete



Home

**Manage Resources**

Administration

About

✓ Publishing version #1 of resource test\_sp started

## test\_sp

### Publishing Status

Jan 9, 2014 5:32:58 PM

✓ Publishing version #1 of resource test\_sp finished successfully

Continue to [resource overview](#).

Download the complete [Publication Log](#)

### Log Messages

- Archive generation started for version #1 5:32:39 PM
- Start writing data file for Darwin Core Occurrence 5:32:39 PM
- Data file written for Darwin Core Occurrence with 99 records and 44 columns 5:32:39 PM
- All data files completed 5:32:39 PM
- EML file added 5:32:39 PM
- meta.xml archive descriptor written 5:32:39 PM
- Archive compressed 5:32:39 PM
- Archive generated successfully! 5:32:39 PM

# Enregistrement d'une ressource (1)



## Visibility **Public**

BRC Forage and turf, II

Register

Private

This resource is public and available to everyone. To make it discoverable, please select the organisation to which the resource is associated and register it with GBIF. To make it accessible only to managers, make it private.

**i** If you want this resource to update an existing registered DiGIR, BioCASE, or TAPIR resource, please ensure the resource is registered against the same owning organization, and that the existing registered resource UUID has been added to the resource's list of alternative identifiers on the [Additional Metadata](#) page.

## Visibility **Public**

✓ BRC Forage and turf, INRA Lusignan

- Agoralogie
- Muséum d'Histoire Naturelle de Bourges
- Musee Vert, Museum d'Histoire Naturelle du Mans
- Muséum d'Histoire Naturelle de Nice
- INRA Antilles-Guyane
- Musée Zoologique de la Ville de Strasbourg
- IFREMER - French Research Institute for Exploitation of the Sea
- Museum George Sand et de la Vallee Noire
- Musee de la Valle
- Université de Strasbourg
- Museum Henri-Lecoq de Clermont-Ferrand

↓

Add

This resource is public and available to everyone. To make it discoverable, please select the organisation to which the resource is associated and register it with GBIF. To make it accessible only to managers, make it private.

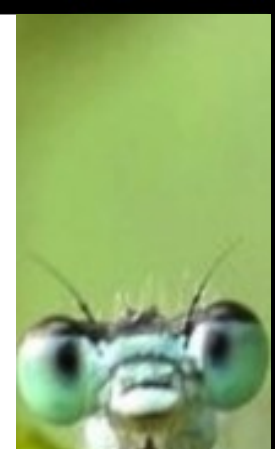
**i** If you want this resource to update an existing registered DiGIR, BioCASE, or TAPIR resource, please ensure the resource is registered against the same owning organization, and that the existing registered resource UUID has been added to the resource's list of alternative identifiers on the [Additional Metadata](#) page.

Resources can be managed by several managers. You can grant other managers permission to modify test\_sp.

Creator

Sophie Pamerlon, pamerlon@gbif.fr

# Enregistrement d'une ressource (2)



### Published Versions

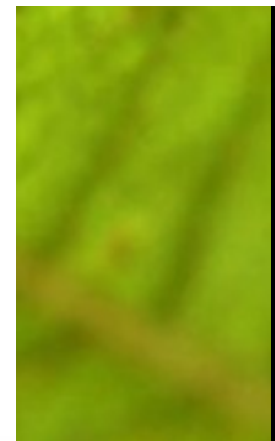
Auto-publishing  
Select interval

A preview of your pending published version compared with the current version if existing.

	Current version	Pending version
Version	1.2 <input type="button" value="View"/> ✓	1.3 <input type="button" value="Preview"/>
Published on	Sep 21, 2015	-
Publication log	<input type="button" value="Download"/>	-

This public resource is registered with GBIF meaning that it is globally discoverable via the [GBIF website](#).

GBIF UUID	<a href="#">eed49c61-2085-46c4-8c4f-d2cda50fd404</a>
Organisation	<a href="#">SPN - Service du Patrimoine naturel, Muséum national d'Histoire naturelle, Paris</a>
Organisation Contact	Frédéric Vest, vest@mnhn.fr
Endorsing Node	<a href="#">GBIF France</a>







# MNHN - Muséum national d'Histoire naturelle

Data publisher. More info at: <http://www.mnhn.fr>

## Information

### Data publisher information

#### FULL TITLE

MNHN - Muséum national d'Histoire naturelle

#### DESCRIPTION

The MNHN is the main French institution for natural history. Both a scientific establishment and a public service, applying itself to research and the dissemination of knowledge, the Museum has five main foundations of its activities. \*Fundamental and applied research \*Education and pedagogy \*Dissemination

#### WEBSITE

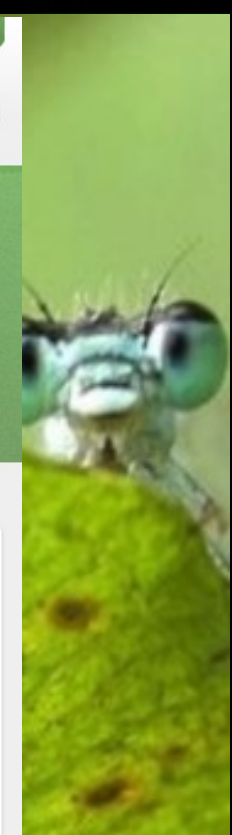
<http://www.mnhn.fr>

#### ENDORSED BY

[GBIF France](#)

### Published datasets

- [Coleoptera specimens of the Muséum national d'Histoire naturelle](#)  
Occurrence dataset. Updated 19 sept. 2012. 3 682 records (1 288 georeferenced)
- [Orthoptera collection at the Muséum national d'Histoire naturelle](#)  
Occurrence dataset. Updated 19 sept. 2012. 2 348 records
- [Fish collections of Museum national d'Histoire naturelle](#)  
Occurrence dataset. Updated 25 avr. 2012. 130 013 records (58 242 georeferenced)
- [Nematoda specimens](#)  
Occurrence dataset. Updated 22 nov. 2011. 14 317 records
- [Reptile and Amphibian specimens](#)  
Occurrence dataset. Updated 22 nov. 2011. 150 272 records
- [Tunicata specimens](#)  
Occurrence dataset. Updated 22 nov. 2011. 8 887 records



# Coleoptera collection (EC) of the Mus...

Occurrence dataset published by MNHN - Muséum national d'Histoire naturelle

4 537

Occurrences

[View occurrences](#)

Information Stats Activity

## Summary

### FULL TITLE

Coleoptera collection (EC) of the Muséum national d'Histoire naturelle (MNHN - Paris)

DOI [doi:10.15468/3leej](https://doi.org/10.15468/3leej)

### PUBLISHED BY

MNHN - Muséum national d'Histoire naturelle

### PUBLICATION DATE

4 juin 2015

### REGISTRATION DATE

25 avr. 2012

### SERVED BY

[MNHN - Collections](#)

### ALTERNATIVE IDENTIFIERS

• [Source webpage](#)

<http://collections.mnhn.fr/pt...>

• **UUID**

eff7d030-3013-43da-b686-6bafdd...

### EXTERNAL DATA

• [Darwin Core Archive](#)



1 902 Georeferenced data

### VIEW RECORDS

[All records](#) | [In viewable area](#)

### ABOUT

[What does this map show?](#)

## Other Contacts

### CONTENT PROVIDER

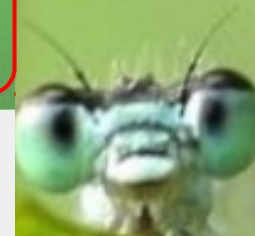
[Antoine Mantilleri](#)

## Citation and licensing

### DEFAULT CITATION

MNHN - Muséum national d'Histoire naturelle: Coleoptera collection (EC) of the Muséum national d'Histoire naturelle (MNHN - Paris), 2015-06-03.

Accessed via <http://www.gbif.org/dataset/eff7d030-3013-43da-b686-6bafdd228131> on 2015-10-09



# Documentation & Références

IPT v2 User Manual

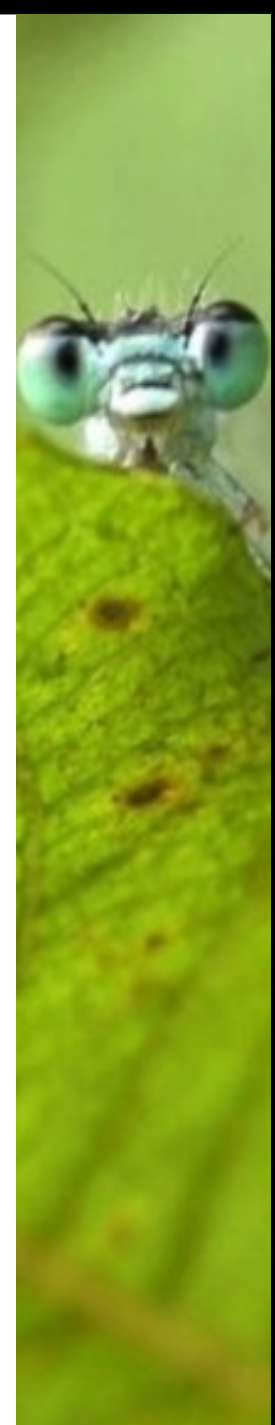
<http://code.google.com/p/gbif-providertoolkit/wiki/IPT2ManualNotes>

Tutoriel de publication des données d'occurrences

<http://code.google.com/p/gbif-providertoolkit/wiki/TutorialOccurrenceResource>

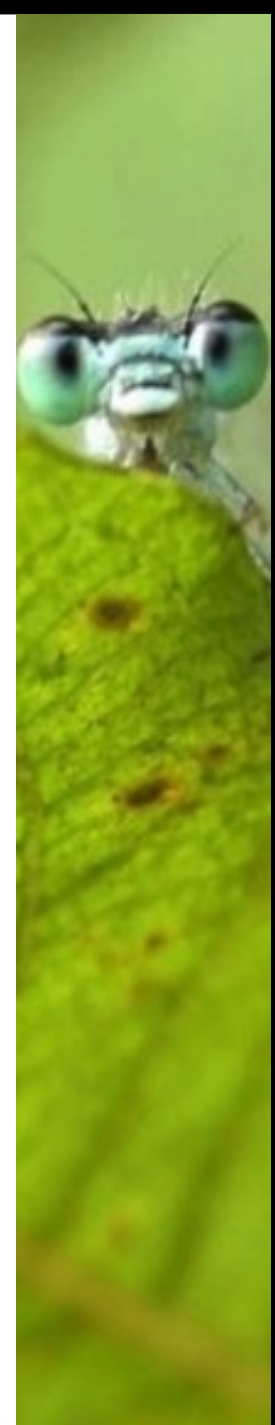
Data Quality Hub

<http://www.gbif.es/BDQ.php>



# Sommaire

- 1. Présentation du GBIF et de ses standards**
- 2. Integrated Publishing Toolkit (IPT)**
- 3. IPT : nouvelles fonctionnalités**



# Licences pour les jeux de données

Home

Manage Resources

Administration

About

Resource Title [Collection malacologique Henri-Lecoq](#)

## Basic Metadata

Please enter all the mandatory properties on the Basic Metadata page, and then continue entering metadata in the other pages that are applicable to your resource. The more metadata you provide, the greater the chance that your resource will be found, reused by other researchers, and cited.


Title\*

Collection malacologique Henri-Lecoq

Publishing Organisation\*

 Museum Henri-Lecoq de C ▼

Type\*

 Occurrence ▼


Metadata Language\*

 French ▼

Update Frequency\*

 Unknown ▼


Subtype

 Select a subtype ▼

Data Language\*

 French ▼

Data Licence\*

- 
  - Creative Commons Attribution Non Commercial (CC-BY-NC) 4.0 ▼
  - No licence selected
  - Creative Commons Attribution (CC-BY) 4.0
  - Creative Commons Attribution Non Commercial (CC-BY-NC) 4.0**
  - Public Domain (CC0 1.0)

*Creative Commons Attribution Non*

## Section

### [Basic Metadata](#)

[Geographic Coverage](#)

[Taxonomic Coverage](#)

[Temporal Coverage](#)

[Keywords](#)

[Associated Parties](#)

[Project Data](#)

[Sampling Methods](#)

[Citations](#)

[Collection Data](#)

[External links](#)

[Additional Metadata](#)

# DOI (Digital Object Identifier)

## Coleoptera collection (EC) of the Mus...

Occurrence dataset published by MNHN - Muséum national d'Histoire naturelle

4 537

Occurrences

[View occurrences](#)

Information

Stats

Activity

### Summary

#### FULL TITLE

Coleoptera collection (EC) of the Muséum national d'Histoire naturelle (MNHN - Paris)

DOI [doi:10.15468/3leej](https://doi.org/10.15468/3leej)

#### DESCRIPTION

Catalog of Coleoptera specimens of the Muséum national d'Histoire naturelle (MNHN - Paris)

#### LANGUAGE OF METADATA

FR

## Occurrence download

doi:10.15468/dl.3cwyz7 8th October 2015

1 527 573

Occurrences

[Download](#)

#### PLEASE NOTE

The download result will be retained for as long as possible, but might be removed in the future.

The [doi:10.15468/dl.3cwyz7](https://doi.org/10.15468/dl.3cwyz7) will always resolve to this page, even if the download is removed.

### Download details

#### IDENTIFIER

DOI [doi:10.15468/dl.3cwyz7](https://doi.org/10.15468/dl.3cwyz7)

#### CITE AS

GBIF.org (8th October 2015) GBIF Occurrence Download <http://doi.org/10.15468/dl.3cwyz7>

#### QUERY

COUNTRY *Peru*

GEOREFERENCED *true*

#### SIZE

92.7 MB

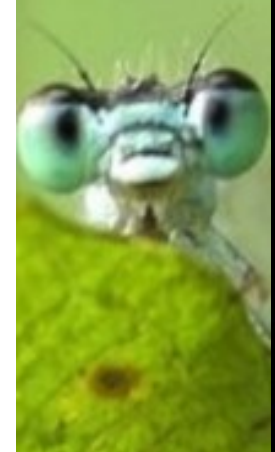
#### FORMAT

CSV

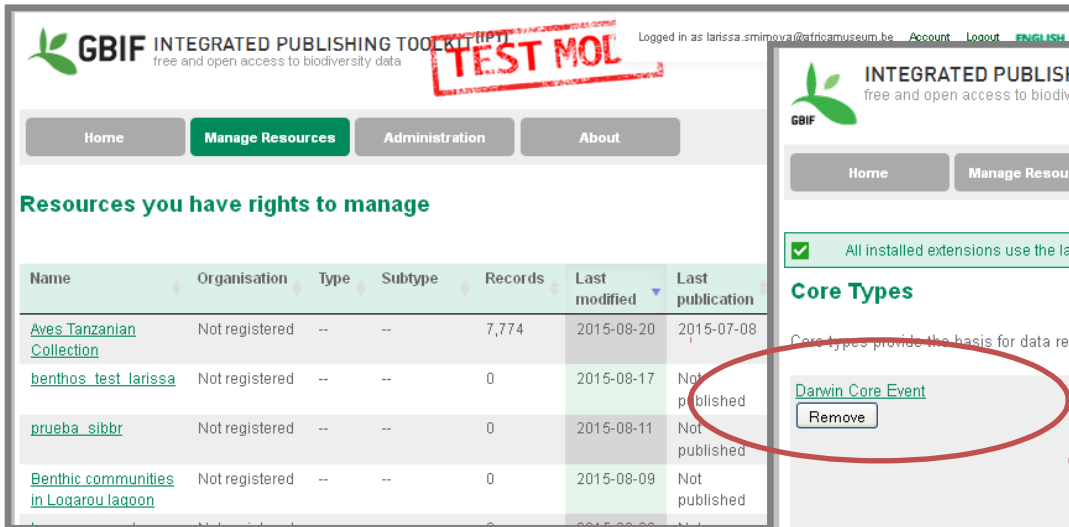
#### STATUS

Succeeded

[query latest data](#)



# Publication de données d'échantillonnage



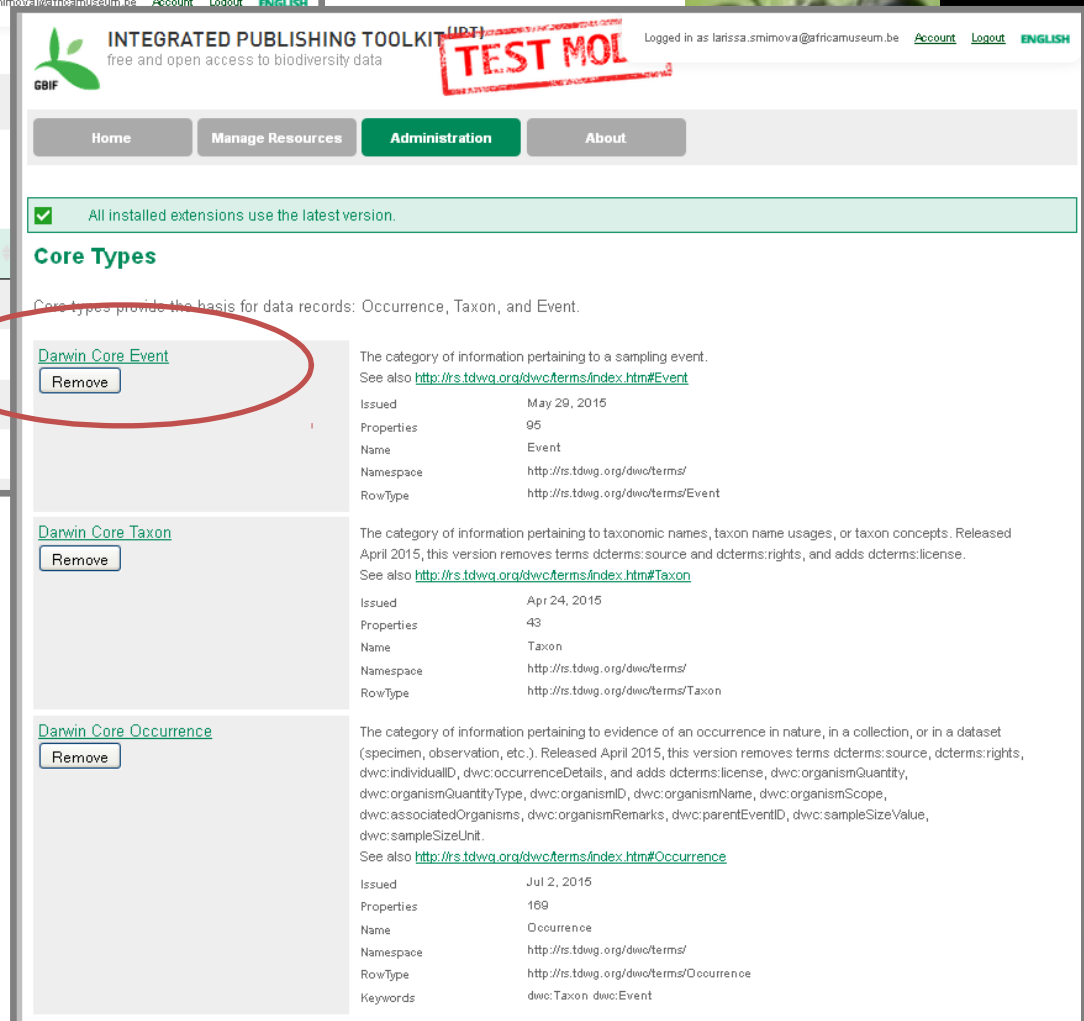
GBIF INTEGRATED PUBLISHING TOOLKIT (IPT)  
free and open access to biodiversity data

Logged in as larissa.sminova@africamuseum.be Account Logout ENGLISH

Home Manage Resources Administration About

### Resources you have rights to manage

Name	Organisation	Type	Subtype	Records	Last modified	Last publication
<a href="#">Aves Tanzanian Collection</a>	Not registered	--	--	7,774	2015-08-20	2015-07-08
<a href="#">benthos_test_larissa</a>	Not registered	--	--	0	2015-08-17	Not published
<a href="#">prueba_sibbr</a>	Not registered	--	--	0	2015-08-11	Not published
<a href="#">Benthic communities in Logarou lagoon</a>	Not registered	--	--	0	2015-08-09	Not published



GBIF INTEGRATED PUBLISHING TOOLKIT (IPT)  
free and open access to biodiversity data

Logged in as larissa.sminova@africamuseum.be Account Logout ENGLISH

Home Manage Resources Administration About

All installed extensions use the latest version.

### Core Types

Core Types provide the basis for data records: Occurrence, Taxon, and Event.

[Darwin Core Event](#)  
Remove

The category of information pertaining to a sampling event. See also <http://rs.tdwg.org/dwc/terms/index.htm#Event>

Issued May 29, 2015  
Properties 95  
Name Event  
Namespace <http://rs.tdwg.org/dwc/terms/>  
RowType <http://rs.tdwg.org/dwc/terms/Event>

[Darwin Core Taxon](#)  
Remove

The category of information pertaining to taxonomic names, taxon name usages, or taxon concepts. Released April 2015, this version removes terms dcterms:source and dcterms:rights, and adds dcterms:license. See also <http://rs.tdwg.org/dwc/terms/index.htm#Taxon>

Issued Apr 24, 2015  
Properties 43  
Name Taxon  
Namespace <http://rs.tdwg.org/dwc/terms/>  
RowType <http://rs.tdwg.org/dwc/terms/Taxon>

[Darwin Core Occurrence](#)  
Remove

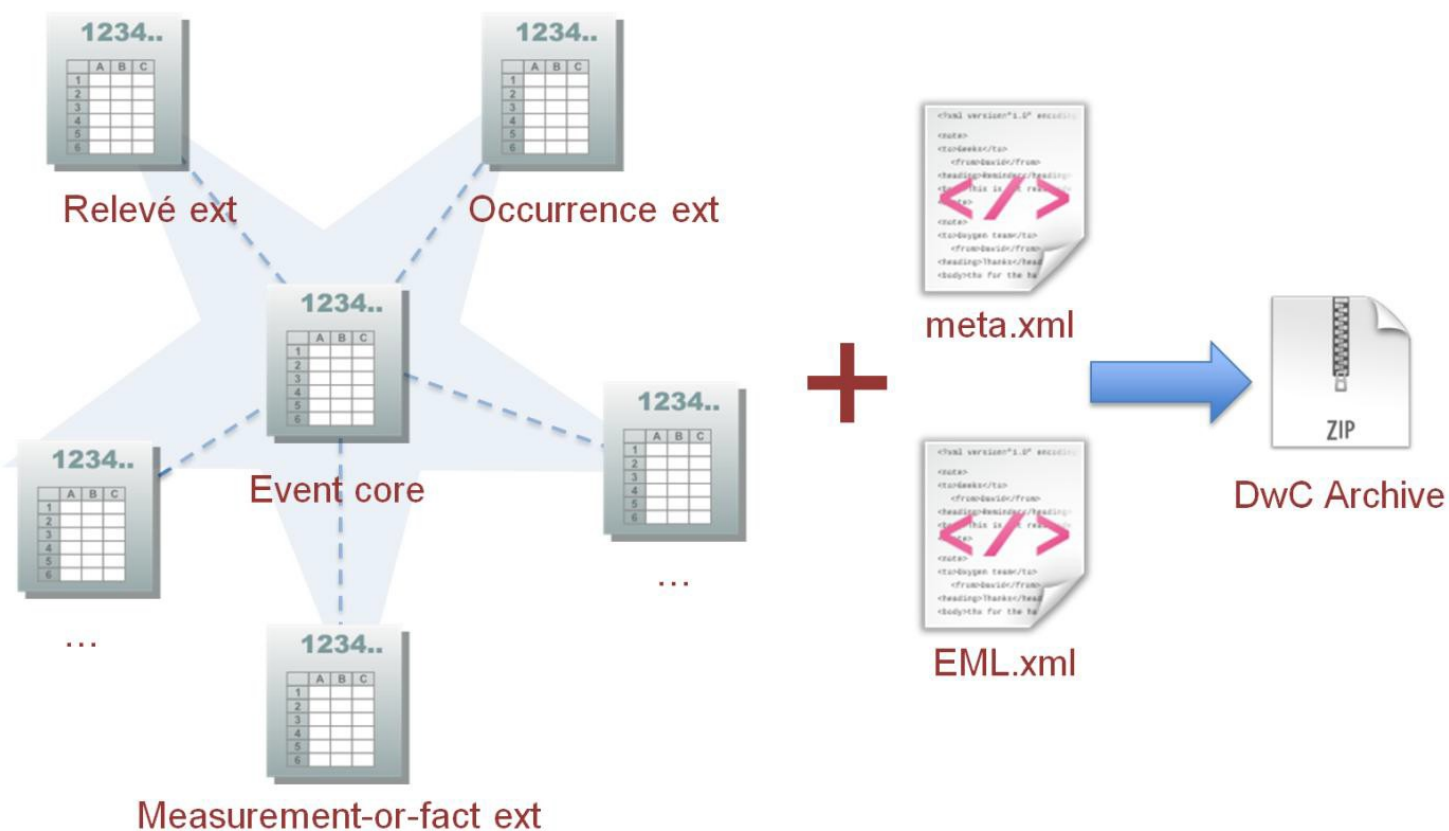
The category of information pertaining to evidence of an occurrence in nature, in a collection, or in a dataset (specimen, observation, etc.). Released April 2015, this version removes terms dcterms:source, dcterms:rights, dwc:individualID, dwc:occurrenceDetails, and adds dcterms:license, dwc:organismQuantity, dwc:organismQuantityType, dwc:organismID, dwc:organismName, dwc:organismScope, dwc:associatedOrganisms, dwc:organismRemarks, dwc:parentEventID, dwc:sampleSizeValue, dwc:sampleSizeUnit. See also <http://rs.tdwg.org/dwc/terms/index.htm#Occurrence>

Issued Jul 2, 2015  
Properties 169  
Name Occurrence  
Namespace <http://rs.tdwg.org/dwc/terms/>  
RowType <http://rs.tdwg.org/dwc/terms/Occurrence>  
Keywords dwc:Taxon dwc:Event

## Nouvelles fonctionnalités de l'IPT

- **Event core et extensions**
- Possibilité d'attribuer un DOI aux ressources
- Génération automatique de citation pour une ressource, incluant le numéro de version et le DOI
- Licences pour les jeux de données

# Archive Darwin Core pour les données d'échantillonnage

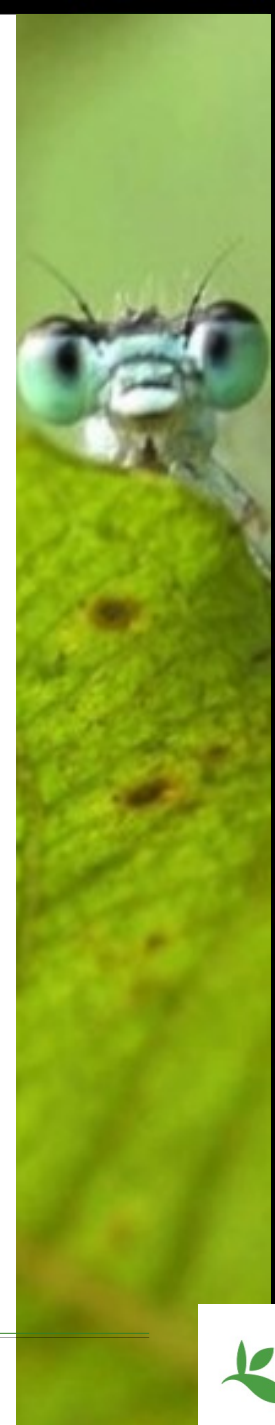




# Termes Darwin Core pour les données d'échantillonnage

7 termes essentiels pour le mapping des  
données d'échantillonnage :

1. eventID
2. parentEventID (nouveau)
3. samplingProtocol
4. sampleSize (nouveau)
5. sampleSizeUnit (nouveau)
6. organismQuantity (nouveau)
7. organismQuantityType (nouveau)





## ACTUALITÉS



01/07/2015

### Nouveaux groupes de travail GBIF sur l'adéquation des données à l'usage

Le GBIF a mis en place deux nouveaux groupes de travail pour améliorer l'utilisation des données accessibles via le réseau GBIF dans les domaines de l'agrobiodiversité et de la modélisation des répartitions d'espèces. Ces deux groupes, composés d'experts internationaux, auront pour tâche d'estimer la couverture et la complétude de ces données afin de recommander des bonnes pratiques pour améliorer la recherche et ses applications concrètes dans ces domaines d'études.

[En savoir plus](#)



**GBIF**

< || >  
5 sur 5

## LE GBIF FRANCE

En tant que membre du Système mondial d'information sur la biodiversité (GBIF) depuis sa création en 2001, la France s'engage à promouvoir l'accès libre et ouvert aux données sur la biodiversité, via Internet.

[En savoir plus](#)



## AGENDA

Formation GBIF France dans le cadre de l'ECOSCOPE	15/09/2015 au 16/09/2015
Colloque Agreenum : Partage des données pour l'agriculture, l'alimentation et l'environnement	04/09/2015
ICCB-ECCB 2015 Conference	02/08/2015 au 06/08/2015
Our Common Future Under Climate Change	07/07/2015 au 10/07/2015

[Consulter l'agenda](#)

## ACCÈS DIRECT

- » [Le GBIF](#)
- » [Portail de données](#)
- » [Formations](#)
- » [Créer son datapaper](#)



## LES DONNÉES FRANÇAISES SUR LA BIODIVERSITÉ

Le portail français du GBIF ouvre l'accès aux données primaires sur la biodiversité fournies par des institutions françaises. Ces données d'occurrences d'espèces sont issues de collections ou d'observations de terrain et ont une distribution géographique mondiale.

**CONSULTER LES 17 575 131 OCCURRENCES**

Nom scientifique, nom vernaculaire, etc.



Recherche avancée

### LES COLLECTIONS



<https://github.com/AtlasOfLivingAustralia/documentation/wiki>

Informations sur les collections françaises sur la biodiversité. Vous retrouvez la description, les contacts et autres informations pratiques sur les acteurs français principaux de la biodiversité.

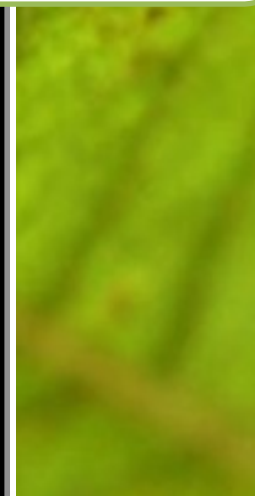
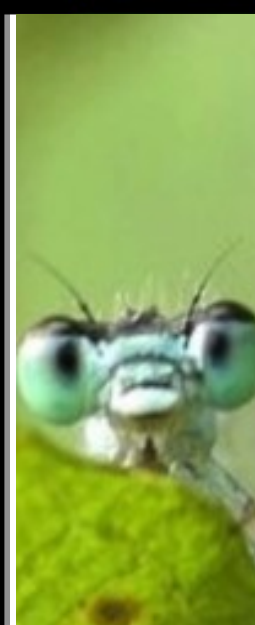
Accès aux données d'occurrences et informations sur les jeux de données publiés par les institutions ou collections participant au GBIF (licence, citation, etc.)

Exploration des occurrences géo-référencées (en cours de construction).

Accéder aux collections

Accéder aux jeux de données

Explorer les occurrences





## MÉTADONNÉES SUR LES INSTITUTIONS, LES COLLECTIONS ET LES PROJETS

Découvrez l'institution, les collections qu'elle contient et affichez les enregistrements de spécimens qui ont été informatisés. Actuellement, seules les collections de France partenaires sont affichées. Au fil du temps, cette liste sera élargie pour inclure toutes les collections d'histoire naturelle de {0}.

Cliquez sur un des bouton pour afficher uniquement ces organismes.

### Toutes les collections

Show all 79 collections.



### Flore

Plantes vasculaires, algues, lichens et bryophytes.



### Faune

Mammifères, oiseaux, reptiles, poissons, amphibiens et invertébrés.



### Mycètes

Champignons.



### Micro-organismes

Protistes, bactéries, virus, champignons microscopiques et algues microscopiques.



### Paléontologie

Organismes fossiles.



Carte **Liste**

Cliquez sur une épingle de la carte pour voir les collections à cet endroit. Utilisez les commandes de la carte pour zoomer sur une zone d'intérêt. Ou faites glisser la souris tout en maintenant la touche Maj enfoncée pour effectuer un zoom sur une zone.

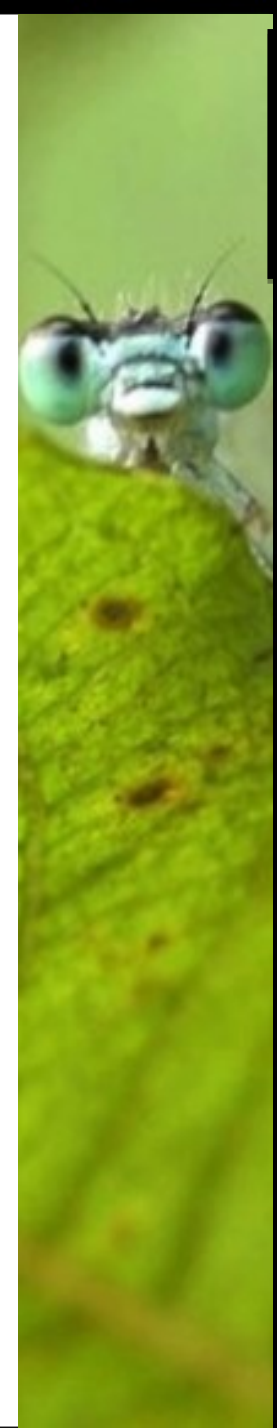


indique qu'il y a plusieurs collections à cet endroit.

79 collections in total.

61 collections are currently visible on the map.

9 collections cannot be mapped.



*Merci de votre attention !*

**Equipe GBIF France**

[gbif@gbif.fr](mailto:gbif@gbif.fr)

**Site web**

[www.gbif.fr](http://www.gbif.fr)

**Twitter**

[@gbiffrance](https://twitter.com/gbiffrance)

